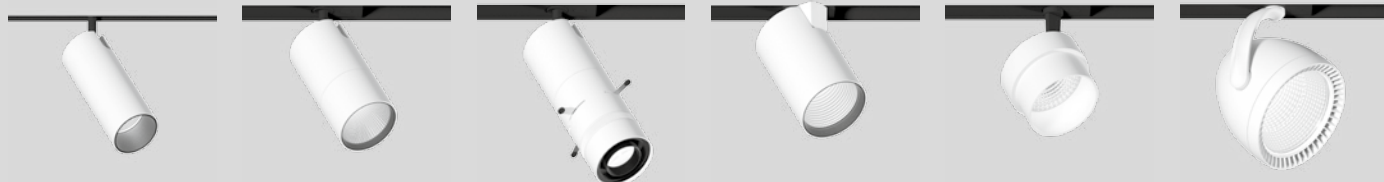


08



FOCOS Y BARRAS CONDUCTORAS SPOTS ET SYSTEMES DE RAIL



BO 55
basic/wls

↻ 680 **new**

BO 70
basic/focus

↻ 684

BO 70
shutter/iris/gobo

↻ 688

TIMO 80
free

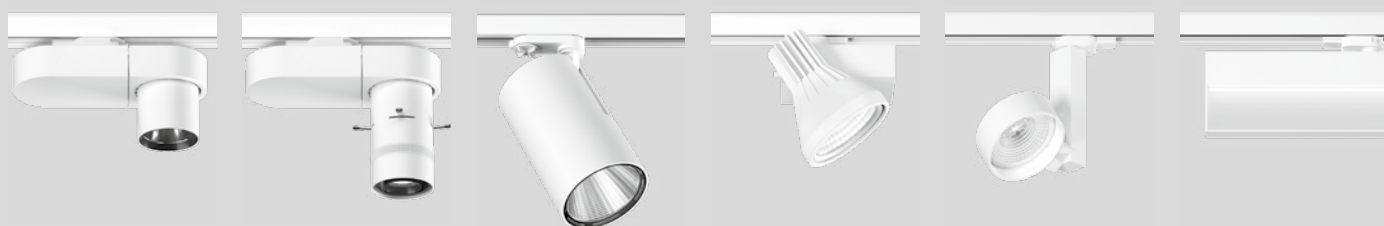
↻ 692

KIS

↻ 700

ARGO

↻ 704



PABLO
basic/focus

↻ 708 **new**

PABLO
shutter/iris/gobo

↻ 712 **new**

VARO

↻ 716 **new**

STUDIO

↻ 720

STRAIGHT

↻ 724

STRAIGHT
wallwasher

↻ 728



SQUADRO
wallwasher

↻ 732 **new**

CANYON 15
recessed

↻ 736 **new**

CANYON 50
offset

↻ 738

CANYON 50
surface/suspended

↻ 742

STILO 40
suspended

↻ 744 **new**

TRACK 3-phase
recessed/
surface/suspended

↻ 746

BO OVERVIEW



Quickinfo

| | BO 55 basic ➔ 680 | BO 70 basic ➔ 684 | BO 70 focus ➔ 684 |
|------------------------|--------------------------------|--------------------------------|--------------------------------|
| SYSTEM POWER | 10 W, 21 W | 26 W | 23 W |
| LUMINOUS FLUX | 710 lm, 1650 lm | 2330 lm | 960 lm, 1360 lm |
| COLOUR RENDERING INDEX | CRI ≥ 90 | CRI ≥ 90 | CRI ≥ 90 |
| COLOUR TEMPERATURE | 2700 K, 3000 K, 4000 K | 3000 K, 4000 K | 3000 K, 4000 K |
| BEAM ANGLE | 6°, 14°, 23°, 33° | 18°, 24°, 36°, 58° | adjustable 17°-47° |
| HEAD DIMENSIONS | ø55 mm / H 140 mm | ø70 mm / H 136 mm | ø70 mm / H 147 mm |
| SUITABLE FOR | CANYON 15 TRACK 3-phase | CANYON 50 TRACK 3-phase | CANYON 50 TRACK 3-phase |



BO 70
shutter
➔ 688

23W
1015 cd, 1476 cd
CRI ≥ 90
3000K, 4000K

adjustable square light illumination

ø70 mm / H 198 mm

CANYON 50
TRACK 3-phase

BO 70
iris
➔ 688

23W
1040 cd, 1512 cd
CRI ≥ 90
3000K, 4000K

adjustable round light illumination

ø70 mm / H 198 mm

CANYON 50
TRACK 3-phase

BO 70
gobo
➔ 688

14W
-
CRI ≥ 90
3000K, 4000K

customised logo

ø70 mm / H 198 mm

CANYON 50
TRACK 3-phase

BO 55

basic/wls

xal.com/bo



Quickinfo

GENERAL

track light
IP20

LED

COB LED module
up to 84 lm/W
2700K, 3000K, 4000K
CRI ≥ 90
Binning initial ≤ 3 MacAdam

ESTIMATED LED LIFETIME

L80/50000h

OPTICAL

direct illumination
beam angle 6°, 14°, 23°, 33°

ELECTRICAL

non DIM

PHYSICAL

aluminium
powder-coated
adapter plastic

Description

ES Proyector de carril; superficie con recubrimiento de pintura en polvo en colores blanco o negro; proyector giratorio 355° y orientable 90°; optimizada para montaje en un perfil CANYON 15, adaptador enrasado con techo; driver integrado en el proyector; con tecnología COB (Chip on Board) para proporcionar una máxima eficiencia; no proporciona sombras múltiples; LEDs de alta eficiencia que proporcionan una alta reproducción cromática; binning inicial ≤ 3 MacAdam; disponible en 2700K, 3000K y 4000K; CRI ≥ 90; mín. 80% de flujo luminoso después de 50.000 horas de vida útil; reflector de aluminio de alta calidad con óptica de bisel esférica; proyección de alta calidad mediante cuatro ángulos diferentes; intercambiable sin herramienta; protección IP20; CP I; Adaptador de 3 fases para aplicación o desplazamiento sin herramienta en un carril electrificado

FR Spot sur rail en fonte d'aluminium injectée; surface thermolaquée blanche ou noir; Tête de spot rotatif à 355° et orientable à 90°; optimisé pour encast. dans un canal CANYON 15, adaptateur affleurant avec plafond; Convertisseur intégré à la tête de spot; avec technologie COB (Chip on Board) pour efficacité maximale; pas de formation d'ombres multiples; LED économes en énergie à restitution de couleur élevée; binning initial ≤ 3 MacAdam; livrable dans les couleurs de lumière 2700K, 3000K et 4000K; CRI ≥ 90; min. 80% du flux lumineux au bout de 50000h de durée de vie; Réflecteur aluminium de grande qualité avec optique facette sphérique; caractéristique de rayonnement précise avec quatre angles de diffusion différents; Installation resp. remplacement sans outil; genre protection IP20; CP I; Adaptateur triphasé pour installation ou déplacement sans outil dans un rail Eutrac

CANYON 15
track

[page 736](#)



BO 55 basic
surface /
semi recessed

[page 240](#)



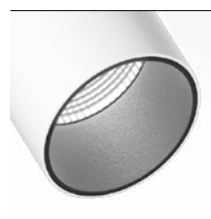
Features



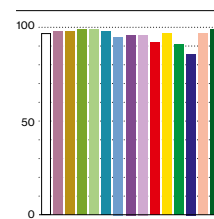
optimised adapter for
CANYON 15



adaptor flush in
standard 3-phase
power tracks



glare-free due to
recessed LED



CRI ≥ 90 (R9 > 90)

Standard configuration

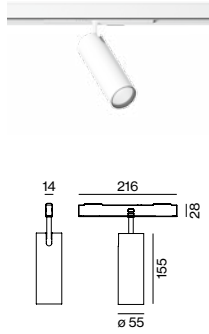
COLOUR TEMPERATURE ☐☐
3000K 5

CONTROL
non DIM

MATERIAL COLOUR ☑
white 7
black 8



BEAM ANGLE ▲
flood 33° F



BO 55 basic



| | | | |
|---------------------|---------------------|----------------------|--------------------------|
| SYSTEM POWER | COLOUR TEMP. | LUMINOUS FLUX | ORDER CODE |
| 21 W | 2700K | 1340lm | 0 5 3 - 3 0 2 1 :: 1 ☑ ▲ |
| | 3000K | 1540lm | |
| | 4000K | 1650lm | |

luminous flux flood 33°

LIGHT DISTRIBUTION for 3000K

| spot 14° | | | medium 23° | | | flood 33° | | |
|----------|--------|-------|------------|--------|-------|-----------|--------|-------|
| h (m) | E (lx) | ø (m) | h (m) | E (lx) | ø (m) | h (m) | E (lx) | ø (m) |
| 1 | 12907 | ø0,25 | 1 | 6769 | ø0,40 | 1 | 3625 | ø0,68 |
| 2 | 3227 | ø0,51 | 2 | 1692 | ø0,81 | 2 | 906 | ø1,37 |
| 3 | 1434 | ø0,76 | 3 | 752 | ø1,21 | 3 | 403 | ø2,05 |
| 4 | 807 | ø1,01 | 4 | 423 | ø1,61 | 4 | 227 | ø2,74 |
| 5 | 516 | ø1,26 | 5 | 271 | ø2,02 | 5 | 145 | ø3,42 |

Extended configuration

COLOUR TEMPERATURE ☐☐
2700K 4
4000K 6

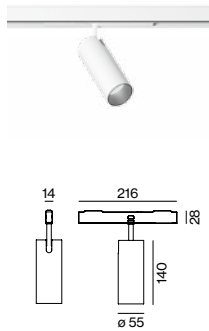
MATERIAL COLOUR ☑
white/black adaptor housing P



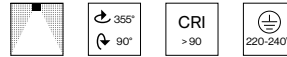
+5% surcharges

REFLECTOR ▲
spot 14° S
medium 23° M

LED LENS ▲
super spot 6° (only for BO 55 wls) V



BO 55 wls



| | | | |
|---------------------|---------------------|----------------------|--------------------------|
| SYSTEM POWER | COLOUR TEMP. | LUMINOUS FLUX | ORDER CODE |
| 10 W | 2700K | 620lm | 0 5 3 - 3 0 2 0 :: 1 ☑ ▲ |
| | 3000K | 710lm | |
| | 4000K | 710lm | |

luminous flux spot 14°

LIGHT DISTRIBUTION for 3000K, BO 55 basic wls

| super spot 6° | | | spot 14° | | |
|---------------|--------|-------|----------|--------|-------|
| h (m) | E (lx) | ø (m) | h (m) | E (lx) | ø (m) |
| 1 | 22562 | ø0,11 | 1 | 6667 | ø0,25 |
| 2 | 5640 | ø0,21 | 2 | 1666 | ø0,50 |
| 3 | 2506 | ø0,32 | 3 | 740 | ø0,75 |
| 4 | 1410 | ø0,43 | 4 | 416 | ø1,01 |
| 5 | 902 | ø0,53 | 5 | 266 | ø1,26 |

| medium 23° | | | flood 33° | | |
|------------|--------|-------|-----------|--------|-------|
| h (m) | E (lx) | ø (m) | h (m) | E (lx) | ø (m) |
| 1 | 2905 | ø0,40 | 1 | 1801 | ø0,60 |
| 2 | 726 | ø0,80 | 2 | 450 | ø1,20 |
| 3 | 322 | ø1,21 | 3 | 200 | ø1,80 |
| 4 | 181 | ø1,61 | 4 | 112 | ø2,40 |
| 5 | 116 | ø2,01 | 5 | 72 | ø3,00 |

Optical accessories

HONEYCOMB LOUVER

| | | |
|------------------|-----------------|-----------------------|
| TYPE | Ø-H (mm) | ORDER CODE |
| honeycomb louver | 50-3 | 0 0 7 - 1 9 6 5 1 9 8 |

Inspiration

Autosalon
Paris, France

ARCHITECT
Schmidhuber Brand Experience GmbH
Munich, Germany

PRODUCT
CANYON 15 recessed
BO 55 basic





BO 70

basic/focus

xal.com/bo



Quickinfo

GENERAL

track light
IP20

LED

COB LED module
up to 88 lm/W
3000 K, 4000 K
CRI ≥ 90
Binning initial ≤ 3 MacAdam

ESTIMATED LED LIFETIME

L80/50000h

OPTICAL

direct illumination
beam angle 18°, 24°, 36°, 58°
beam angle (focus) 17–47°

ELECTRICAL

non DIM, DIM DALI

PHYSICAL

aluminium
powder-coated
polycarbonate driver housing

Description

ES Proyector de carril; superficie con recubrimiento de pintura en polvo en colores blanco o negro; proyector giratorio 355° y orientable 180°; optimizado para montaje en un canal CANYON 50, adaptador desaparece en el canal; Convertidor integrado en adaptador de plástico; con tecnología COB (Chip on Board) para proporcionar una máxima eficiencia; no proporciona sombras múltiples; LEDs de alta eficiencia que proporcionan una alta reproducción cromática; binning inicial ≤ 3 MacAdam; disponible en 3000 K y 4000 K; CRI ≥ 90; mín. 80 % de flujo luminoso después de 50.000 horas de vida útil; BO 70 basic: reflector de aluminio de alta calidad con óptica facetada esférica; anodizado en brillo intenso; precisa característica de emisión con cuatro diferentes ángulos de emisión; puede instalarse y cambiarse sin herramientas; BO 70 focus: incluye lente de vidrio planoconvexa de alta calidad; enfoque exacto del objeto mediante lente ajustable; ángulo de emisión ajustable de 17° a 47°; enfoque por medio de anillo de ajuste engomado en el cabezal del proyector; protección IP20; CP I; adaptador para instalación sin herramientas y facilita el desplazamiento en diferentes carriles de 3 fases; opcional dimable DALI

FR Spot sur rail en fonte d'aluminium injectée; surface thermolaquée blanche ou noir; Tête de spot rotatif à 355° et orientable à 180°; optimisé pour encastrement dans un canal CANYON ou Minyon 50, adaptateur dissimulé dans le canal; Convertisseur intégré à l'adaptateur plastique; avec technologie COB (Chip on Board) pour efficacité maximale; pas de formation d'ombres multiples; LED économes en énergie à restitution de couleur élevée; binning initial ≤ 3 MacAdam; livrable dans les couleurs de lumière 3000 K et 4000 K; CRI ≥ 90; min. 80 % du flux lumineux au bout de 50000 h de durée de vie; BO 70 basic: réflecteur de haute qualité en aluminium avec optique sphérique à facettes; anodisé brillant; caractéristiques précises de rayonnement avec quatre angles différents de rayonnement; peut être installé ou changé sans outil; BO 70 focus: lentille de verre plan-convexe de haute qualité incluse; focalisation précise sur les objets par lentille ajustable; angle de rayonnement réglable de 17° à 47°; focalisation au moyen d'une bague de réglage caoutchoutée sur la tête du projecteur; genre protection IP20; CP I; Adaptateur pour installation ou déplacement sans outil dans différents rails triphasés; en option gradable DALI

CANYON 50
offset

[page 738](#)



CANYON 50
surface / susp.

[page 742](#)



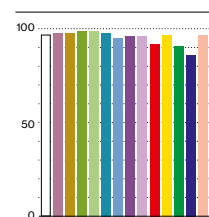
Features



optimised adaptor for
CANYON 50



adjustable beam angle
17–47° (BO 70 focus)



CRI ≥ 90 (R9 > 90)

Standard configuration

COLOUR TEMPERATURE 
3000K 5

CONTROL 
non DIM 1

MATERIAL COLOUR 
white 7
black 8



BEAM ANGLE 
flood 36° F

Extended configuration


COLOUR TEMPERATURE 
4000K 6

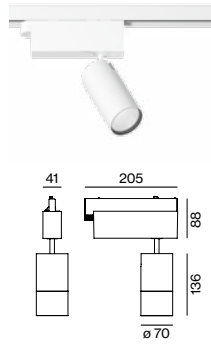
CONTROL 
DIM DALI 3

MATERIAL COLOUR 
white/black adaptor housing P

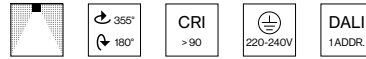





+5% surcharges

BEAM ANGLE 
spot 18° S
medium 24° M
wide flood 58° W



BO 70 basic



SYSTEM POWER 26 W
COLOUR TEMP. 3000K / 4000K
LUMINOUS FLUX 2180lm / 2330lm
ORDER CODE 0 5 3 - 3 2 4 1   

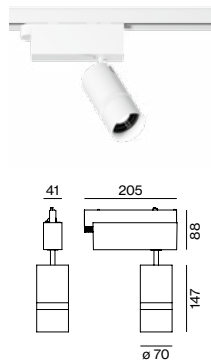
luminous flux spot 18°

LIGHT DISTRIBUTION for 26 W, 3000 K

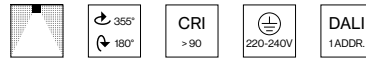
| spot 18° | | | medium 24° | | | flood 36° | | |
|----------|--------|-------|------------|--------|-------|-----------|--------|-------|
| h (m) | E (lx) | ø (m) | h (m) | E (lx) | ø (m) | h (m) | E (lx) | ø (m) |
| 1 | 13907 | ø0,31 | 1 | 9006 | ø0,42 | 1 | 5279 | ø0,65 |
| 2 | 3476 | ø0,62 | 2 | 2251 | ø0,84 | 2 | 1319 | ø1,31 |
| 3 | 1545 | ø0,93 | 3 | 1000 | ø1,27 | 3 | 586 | ø1,96 |
| 4 | 869 | ø1,24 | 4 | 562 | ø1,69 | 4 | 329 | ø2,61 |
| 5 | 556 | ø1,55 | 5 | 360 | ø2,11 | 5 | 211 | ø3,27 |

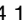


wide flood 58°

| h (m) | E (lx) | ø (m) |
|-------|--------|-------|
| 1 | 2223 | ø1,12 |
| 2 | 555 | ø2,24 |
| 3 | 247 | ø3,35 |
| 4 | 138 | ø4,47 |
| 5 | 88 | ø5,59 |



BO 70 focus



SYSTEM POWER 23 W
COLOUR TEMP. 3000K / 4000K
LUMINOUS FLUX 1260lm / 1360lm
ORDER CODE 0 5 3 - 3 4 4 1   

LIGHT DISTRIBUTION for 3000 K

| min. angle 17° | | | max. angle 47° | | |
|----------------|--------|-------|----------------|--------|-------|
| h (m) | E (lx) | ø (m) | h (m) | E (lx) | ø (m) |
| 1 | 5316 | ø0,30 | 1 | 2187 | ø0,87 |
| 2 | 1329 | ø0,60 | 2 | 546 | ø1,74 |
| 3 | 590 | ø0,89 | 3 | 243 | ø2,60 |
| 4 | 332 | ø1,19 | 4 | 136 | ø3,47 |
| 5 | 212 | ø1,49 | 5 | 87 | ø4,34 |

Inspiration

Taschen Store
Berlin, Germany

ARCHITECT

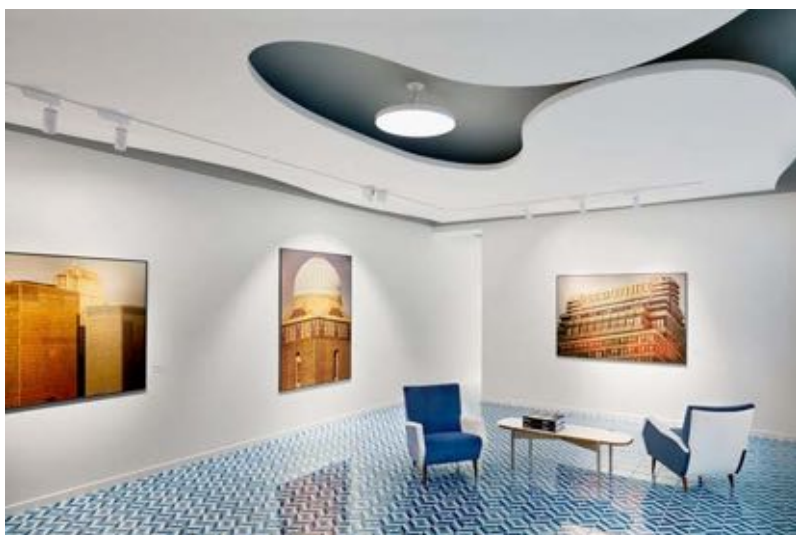
SPIESS Interior Design
Dresden, Germany

LIGHTING DESIGN

Salvatore Licitra
Alberto Stampanoni
Milan, Italy

PRODUCT

TRACK 3-phase recessed
BO 70 basic





BO 70

shutter / iris / gobo

xal.com/bo



Quickinfo

GENERAL

track light
IP20

LED

COB LED module
up to 1512 cd
3000 K, 4000 K
CRI ≥ 90
Binning initial ≤ 3 MacAdam

ESTIMATED LED LIFETIME

L80/50 000 h

OPTICAL

direct illumination
form illumination

ELECTRICAL

non DIM, DIM DALI

PHYSICAL

aluminium
powder-coated
polycarbonate driver housing

Description

ES Proyector de carril; superficie con recubrimiento de pintura en polvo en colores blanco o negro; proyector giratorio 355° y orientable 180°; optimizado para montaje en un canal CANYON 50, adaptador desaparece en el canal; Convertidor integrado en adaptador de plástico; con tecnología COB (Chip on Board) para proporcionar una máxima eficiencia; no proporciona sombras múltiples; LEDs de alta eficiencia que proporcionan una alta reproducción cromática; binning inicial ≤ 3 MacAdam; disponible en 3000 K y 4000 K; CRI ≥ 90; mín. 80 % de flujo luminoso después de 50.000 horas de vida útil; proyector de contorno para conseguir una forma rectangular o redonda exacta; ajuste sencillo con 4 elementos de ensombrecimiento o con ensombrecedor en forma de iris de acero inoxidable; incluida lente biconvexa de alta calidad; enfoque nítido del objeto a través de una optica ajustable; enfoque realizado manualmente mediante una pieza ubicada en el cabezal proyector; protección IP20; CP I; adaptador para instalación sin herramientas y facilita el desplazamiento en diferentes carriles de 3 fases; opcional dimable DALI

FR Spot sur rail en fonte d'aluminium injectée; surface thermolaquée blanche ou noir; Tête de spot rotatif à 355° et orientable à 180°; optimisé pour encastrement dans un canal CANYON ou Minyon 50, adaptateur dissimulé dans le canal; Convertisseur intégré à l'adaptateur plastique; avec technologie COB (Chip on Board) pour efficacité maximale; pas de formation d'ombres multiples; LED économes en énergie à restitution de couleur élevée; binning initial ≤ 3 MacAdam; livrable dans les couleurs de lumière 3000 K et 4000 K; CRI ≥ 90; min. 80 % du flux lumineux au bout de 50000 h de durée de vie; projecteur de contours pour la création de formes précises, rectangulaires ou rondes; réglage simple par 4 éléments obscurcissants ou élément obscurcissant en forme d'iris en inox; incl. lentille verre biconvexe grande qualité; focalisation nette sur objet par lentille ajustable; Focalisation par bague de réglage à gomme sur tête de spot; genre protection IP20; CP I; Adaptateur pour installation ou déplacement sans outil dans différents rails triphasés; en option gradable DALI

Features

CANYON 50
offset

[page 738](#)



CANYON 50
surface / susp.

[page 742](#)



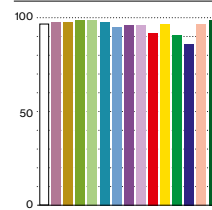
optimised adaptor for
CANYON 50



shutter element
(BO 70 shutter)



adjustable lens



CRI ≥ 90 (R9 > 90)

Standard configuration

COLOUR TEMPERATURE ◆◆
3000K 5

CONTROL ◆◆
non DIM 1

MATERIAL COLOUR ◆
white 7
black 8



Extended configuration

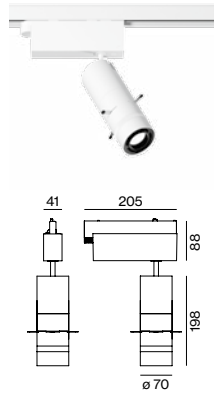
COLOUR TEMPERATURE ◆◆
4000K 6

CONTROL ◆◆
DIM DALI 3

MATERIAL COLOUR ◆
white/black adaptor housing P



+5% surcharges



BO 70 shutter



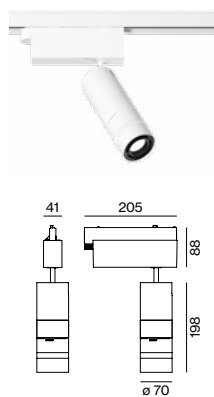
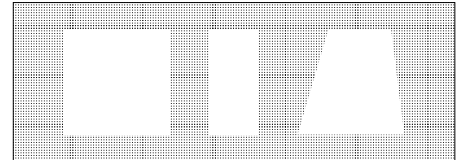
| SYSTEM POWER | COLOUR TEMP. | LUM. INTENSITY | ORDER CODE |
|--------------|--------------|----------------|---|
| 23 W | 3000 K | 1375 cd | 0 5 3 - 3 7 4 1 ◆◆◆ |
| | 4000 K | 1476 cd | |

illuminance (lux) = luminous intensity (cd) / distance (m)²

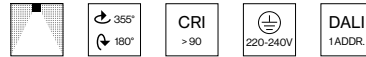
LIGHT DISTRIBUTION 3000 K

adjustable possible forms of illumination

| h (m) | E (lx) | ø (m) |
|-------|--------|-------|
| 1 | 1196 | ø0,56 |
| 2 | 299 | ø1,12 |
| 3 | 132 | ø1,68 |
| 4 | 74 | ø2,24 |
| 5 | 47 | ø2,79 |



BO 70 iris



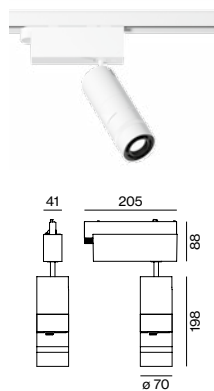
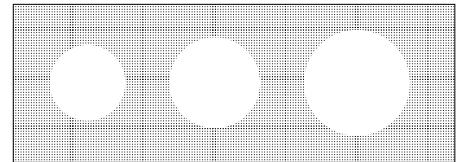
| SYSTEM POWER | COLOUR TEMP. | LUM. INTENSITY | ORDER CODE |
|--------------|--------------|----------------|---|
| 23 W | 3000 K | 1409 cd | 0 5 3 - 3 8 4 1 ◆◆◆ |
| | 4000 K | 1512 cd | |

illuminance (lux) = luminous intensity (cd) / distance (m)²

LIGHT DISTRIBUTION for 3000 K

adjustable possible forms of illumination

| h (m) | E (lx) | ø (m) |
|-------|--------|-------|
| 1 | 1363 | ø0,57 |
| 2 | 340 | ø1,13 |
| 3 | 151 | ø1,70 |
| 4 | 85 | ø2,26 |
| 5 | 54 | ø2,83 |



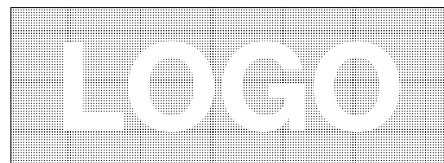
BO 70 gobo



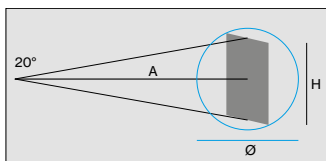
| SYSTEM POWER | COLOUR TEMP. | LUM. INTENSITY | ORDER CODE |
|--------------|--------------|----------------|------------|
| 14 W | 3000 K | - | on request |
| | 4000 K | - | |

LIGHT DISTRIBUTION

possible forms of illumination



Illumination size



| A (mm) | H (mm) | ø (mm) |
|--------|--------|--------|
| 1000 | 396 | 560 |
| 2000 | 792 | 1120 |
| 3000 | 1188 | 1680 |

Inspiration

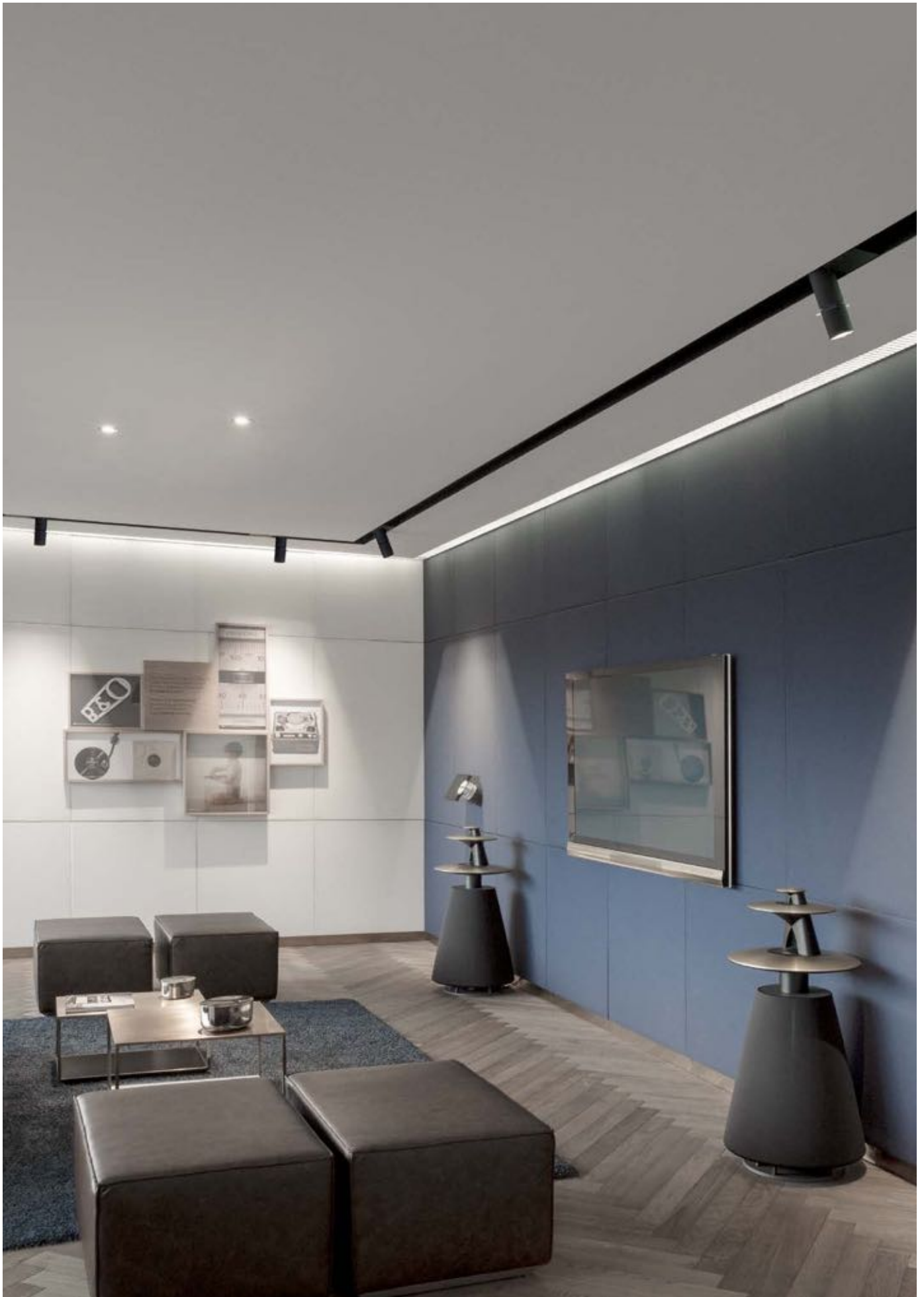
BANG & OLUFSEN
Herning, Denmark

PRODUCT
CANYON 50 offset
BO 70 shutter track

ARCHITECT
Johannes Torpe Studio
Copenhagen, Denmark

LIGHTING DESIGN
SENSA by Thomas Skovby
Frederiksberg, Denmark

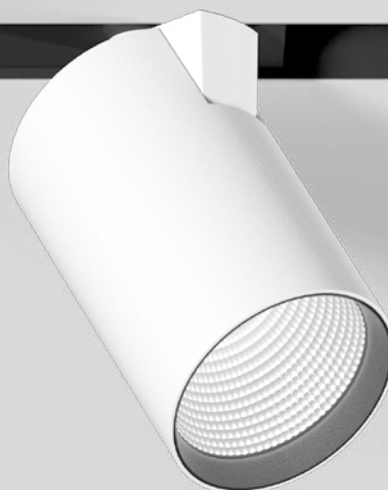




TIMO 80

free

xal.com/timo-80-free



Quickinfo

GENERAL

track light
IP20

LED

COB LED module
up to 130lm/W
3000 K, 4000 K
CRI ≥ 80, CRI ≥ 90
Binning initial ≤ 3 MacAdam

ESTIMATED LED LIFETIME

L80/ 50 000 h

OPTICAL

direct illumination
beam angle 19°, 28°, 37°
optical accessories

ELECTRICAL

non DIM, DIM DALI

PHYSICAL

aluminium
powder-coated
polycarbonate driver housing

Description

ES Proyector de carril; giratorio 355° y extraíble en 90°; optimizado para montaje en un canal CANYON 50, adaptador desaparece en el canal; superficie con recubrimiento de pintura en polvo en colores blanco o negro; Convertidor integrado en adaptador de plástico; los accesorios ópticos están disponibles como accesorios; refrigeración pasiva de LEDs; con tecnología COB (Chip on Board) para proporcionar una máxima eficiencia; no proporciona sombras múltiples; LEDs de alta eficiencia que proporcionan una alta reproducción cromática; binning inicial ≤ 3 MacAdam; disponible en 3000 K y 4000 K; CRI ≥ 80 o CRI ≥ 90; mín. 80% de flujo luminoso después de 50.000 horas de vida útil; reflector de aluminio de alta calidad con óptica de bisel esférica; anodizado en brillo; proyección precisa con tres ángulos diferentes; intercambiable sin herramienta; protección IP20; CP I; adaptador para instalación sin herramientas y facilita el desplazamiento en diferentes carriles de 3 fases; opcional dimable DALI

FR Spot sur rail en fonte d'aluminium injectée; rotatif à 355° et pivotant à 90°; optimisé pour encastrement dans un canal CANYON ou Minyon 50, adaptateur dissimulé dans le canal; surface thermolaquée blanche ou noire; Convertisseur intégré à l'adaptateur plastique; éléments optiques disponibles comme accessoires; refroidissement passif de LED par géométrie dissipateur thermique optimisée; avec technologie COB (Chip on Board) pour efficacité maximale; pas de formation d'ombres multiples; LED économes en énergie à restitution de couleur élevée; binning initial ≤ 3 MacAdam; livrable dans les couleurs de lumière 3000 K et 4000 K; CRI ≥ 80 ou CRI ≥ 90; min. 80% du flux lumineux au bout de 50000h de durée de vie; Réflecteur aluminium de grande qualité avec optique facette sphérique; anodisé haute brillance; caractéristique de rayonnement précise avec trois angles de diffusion différents; Installation resp. remplacement sans outil; genre protection IP20; CP I; Adaptateur pour installation ou déplacement sans outil dans différents rails triphasés; en option gradable DALI

CANYON 50
offset

[page 738](#)



CANYON 50
surface / susp.

[page 742](#)



Features



optimised adaptor for
CANYON 50

Standard configuration

COLOUR RENDERING INDEX +
CRI ≥ 80 3

COLOUR TEMPERATURE ::
3000K 5

CONTROL ◆
non DIM 1

MATERIAL COLOUR ☑
white 7
black 8



BEAM ANGLE ▲
flood 37° F

Extended configuration

COLOUR RENDERING INDEX +
CRI ≥ 90 (only 3000K) 4

COLOUR TEMPERATURE ::
4000K 6

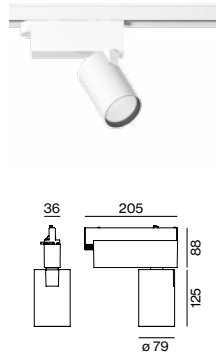
CONTROL ◆
DIM DALI 3

MATERIAL COLOUR ☑
white/black adaptor housing P



+5% surcharges

BEAM ANGLE ▲
spot 19° S
medium 28° M



TIMO 80 free



| SYSTEM POWER | COLOUR TEMP. | LUMINOUS FLUX | ORDER CODE |
|--------------|--------------|---------------|------------------------|
| 19W | 3000K | 2390lm | 0 5 3 - 0 3 + 0 :: ◆ ▲ |
| | 4000K | 2470lm | |
| 29W | 3000K | 3310lm | 0 5 3 - 0 3 + 1 :: ◆ ▲ |
| | 4000K | 3420lm | |

luminous flux spot 19°

LIGHT DISTRIBUTION for 29W, 3000K

| spot 19° | | | medium 28° | | | flood 37° | | |
|----------|--------|-------|------------|--------|-------|-----------|--------|-------|
| h (m) | E (lx) | ø (m) | h (m) | E (lx) | ø (m) | h (m) | E (lx) | ø (m) |
| 1 | 15485 | ø0,34 | 1 | 11068 | ø0,50 | 1 | 7705 | ø0,66 |
| 2 | 3871 | ø0,68 | 2 | 2767 | ø1,00 | 2 | 1926 | ø1,32 |
| 3 | 1720 | ø1,02 | 3 | 1229 | ø1,50 | 3 | 856 | ø1,99 |
| 4 | 967 | ø1,36 | 4 | 691 | ø2,00 | 4 | 481 | ø2,65 |
| 5 | 619 | ø1,70 | 5 | 442 | ø2,50 | 5 | 308 | ø3,31 |

Optical accessories

LENSES AND HONEYCOMB LOUVER



| TYPE | Ø-H (mm) | ORDER CODE |
|-----------------------|----------|-------------------|
| linear prismatic lens | 72·3 | 0 0 6 - 9 2 2 0 7 |
| honeycomb louver | 72·3 | 0 0 6 - 9 3 1 0 2 |

Inspiration

Eggersmann Küchen
Hiddenhausen, Germany

PRODUCT
CANYON 50 offset
TIMO 80 free

ARCHITECT
BKS Architekten
Lübbecke, Germany





Inspiration

Puma Store
London, United Kingdom

PRODUCT
TRACK 3-phase suspended
TIMO 80 free

ARCHITECT
Plajer & Franz Studio
Berlin, Germany





Inspiration

My Duty Free Munich Airport
Munich, Germany

PRODUCT
CANYON 50 offset
TIMO 80 free

ARCHITECT
Gruschwitz
Munich, Germany





KIS

xal.com/kis



Quickinfo

GENERAL

track light
IP20

LED

COB LED module
up to 68lm/W
3000 K
CRI ≥ 90
Binning initial ≤ 3 MacAdam

ESTIMATED LED LIFETIME

L80/50 000 h

OPTICAL

direct illumination
beam angle 21°, 36°

ELECTRICAL

non DIM, DIM DALI

PHYSICAL

aluminium
powder-coated
polycarbonate driver housing

Description

ES Proyector de carril; giratorio 355° y orientable en 85°; superficie con recubrimiento de pintura en polvo en colores blanco o negro; optimizado para montaje en un canal CANYON 50, adaptador desaparece en el canal; Convertidor integrado en adaptador de plástico; refrigeración pasiva de LEDs; con tecnología COB (Chip on Board) para proporcionar una máxima eficiencia; no proporciona sombras múltiples; LEDs de alta eficiencia que proporcionan una alta reproducción cromática; binning inicial ≤ 3 MacAdam; disponible en 3000 K; CRI ≥ 90; mín. 80% de flujo luminoso después de 50.000 horas de vida útil; lente individual alta calidad; efecto lumínico de alta calidad con dos ángulos de proyección diferentes; protección IP20; CP I; adaptador para instalación sin herramientas y facilita el desplazamiento en diferentes carriles de 3 fases; opcional dimable DALI

FR Spot sur rail en fonte d'aluminium injectée; rotatif à 355° et orientable à 85°; surface thermolaquée blanche ou noir; optimisé pour encastrer dans un canal CANYON ou Minyon 50, adaptateur dissimulé dans le canal; Convertisseur intégré à l'adaptateur plastique; refroidissement passif de LED par géométrie dissipateur thermique optimisée; avec technologie COB (Chip on Board) pour efficacité maximale; pas de formation d'ombres multiples; LED économes en énergie à restitution de couleur élevée; binning initial ≤ 3 MacAdam; livrable dans la couleur de lumière 3000 K; CRI ≥ 90; min. 80% du flux lumineux au bout de 50000 h de durée de vie; Lent. uniq. haute qualité; caractéristique de rayonnement précise avec deux angles de diffusion différents; genre protection IP20; CP I; Adaptateur pour installation ou déplacement sans outil dans différents rails triphasés; en option gradable DALI

CANYON 50

offset

[page 738](#)



CANYON 50

surface / susp.

[page 742](#)



Features



optimised adaptor for
CANYON 50



high quality lens

Standard configuration

COLOUR TEMPERATURE

3000K

CONTROL

non DIM

3

MATERIAL COLOUR

white/black adaptor housing

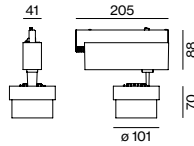
P



BEAM ANGLE

flood 36°

F



KIS



SYSTEM POWER

12W

16W

COLOUR TEMP.

3000K

3000K

LUMINOUS FLUX

810lm

1080lm

ORDER CODE

0 4 9 - 1 7 2 1 5

0 4 9 - 1 7 2 2 5

luminous flux medium 23°

LIGHT DISTRIBUTION for 16W

medium 21°

flood 36°

| h (m) | E (lx) | ø (m) | h (m) | E (lx) | ø (m) |
|-------|--------|--------|-------|--------|--------|
| 1 | 6221 | ø 0,36 | 1 | 1484 | ø 0,65 |
| 2 | 1555 | ø 0,73 | 2 | 371 | ø 1,30 |
| 3 | 691 | ø 1,09 | 3 | 164 | ø 1,95 |
| 4 | 388 | ø 1,46 | 4 | 92 | ø 2,60 |
| 5 | 248 | ø 1,82 | 5 | 59 | ø 3,25 |

Extended configuration

CONTROL

DIM DALI

2

MATERIAL COLOUR

black

8



+5% surcharges

BEAM ANGLE

medium 21°

M

Inspiration

Public Building
Visualisation

PRODUCT
CANYON 50 offset
KIS





ARGO

xal.com/argo



Quickinfo

GENERAL

track light
IP20

LED

COB LED module
up to 102 lm/W
3000 K, 4000 K
CRI ≥ 90
Binning initial ≤ 3 MacAdam

ESTIMATED LED LIFETIME

L80/50000h

OPTICAL

direct illumination
beam angle 14°, 25°, 41°
optical accessories

ELECTRICAL

non DIM, DIM DALI

PHYSICAL

aluminium
powder-coated
polycarbonate driver housing

Description

ES Proyector de carril; giratorio 365° y orientable en 90°; superficie con recubrimiento de pintura en polvo en colores blanco o negro; optimizado para montaje en un canal CANYON 50, adaptador desaparece en el canal; Convertidor integrado en adaptador de plástico; los accesorios ópticos están disponibles como accesorios; refrigeración pasiva del LED mediante cuerpo de refrigeración optimizada; con tecnología COB (Chip on Board) para eficiencia máxima; no proporciona sombras múltiples; LEDs de alta eficiencia que proporcionan una alta reproducción cromática; binning inicial ≤ 3 MacAdam; disponible en 3000 K y 4000 K; CRI ≥ 90; mín. 80 % de flujo luminoso después de 50.000 horas de vida útil; lente individual alta calidad; proyección precisa con tres ángulos diferentes; intercambiable sin herramienta; protección IP20; CP I; adaptador para instalación sin herramientas o desplazamiento en diferentes carriles electrificados de 3 fases; opcional dimable DALI

FR Spot sur rail en fonte d'aluminium injectée; rotatif à 365° et orientable à 90°; surface thermolaquée blanche ou noir; optimizado para montaje en un canal CANYON 50, adaptador desaparece en el canal; Convertisseur intégré à l'adaptateur plastique; éléments optiques disponibles comme accessoires; refroidissement passif de LED par géométrie dissipateur thermique optimisée; avec technologie COB (Chip on Board) pour efficacité maximale; pas de formation d'ombres multiples; LED économes en énergie à restitution de couleur élevée; binning initial ≤ 3 MacAdam; livrable dans les couleurs de lumière 3000 K et 4000 K; CRI ≥ 90; min. 80 % du flux lumineux au bout de 50000h de durée de vie; Lent. uniq. haute qualité; caractéristique de rayonnement précise avec trois angles de diffusion différents; Installation resp. remplacement sans outil; genre protection IP 20; CP I; Adaptateur pour installation ou déplacement sans outil dans différents rails triphasés; en option gradable DALI

CANYON 50
offset

[page 738](#)



CANYON 50
surface / susp.

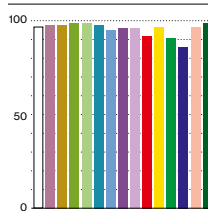
[page 742](#)



Features



optimised adaptor for
CANYON 50



CRI ≥ 90 (R9 > 90)

Standard configuration

COLOUR TEMPERATURE 
3000K 5

CONTROL 
non DIM 1

MATERIAL COLOUR 
white 7

7

BEAM ANGLE 
medium 25° M

Extended configuration

COLOUR TEMPERATURE 
4000K 6

CONTROL 
DIM DALI 3

MATERIAL COLOUR 
black 8
white/black adaptor housing P

8 P

+5% surcharges

BEAM ANGLE 
spot 14° S
flood 41° F

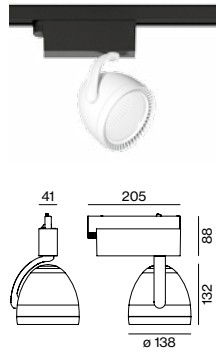
Options on request

SPECIAL COLOUR

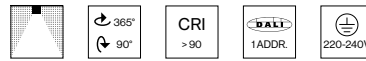
vogue CRI ≥ 90
gallery CRI 98
gourmet CRI ≥ 80
fresh meat & fish CRI ≥ 80
pastry CRI ≥ 80
brilliant white CRI ≥ 90



REFLECTOR

wide flood 58°



ARGO



| SYSTEM POWER | COLOUR TEMP. | LUMINOUS FLUX | ORDER CODE |
|--------------|--------------|---------------|---|
| 28 W | 3000 K | 2670 lm | 0 5 3 - 8 1 3 0  |
| | 4000 K | 2860 lm | |
| 44 W | 3000 K | 3590 lm | 0 5 3 - 8 1 3 1  |
| | 4000 K | 3850 lm | |

luminous flux medium 25°

LIGHT DISTRIBUTION for 44W, 3000K

| spot 14° | | | medium 25° | | | flood 41° | | |
|----------|--------|-------|------------|--------|-------|-----------|--------|-------|
| h (m) | E (lx) | ø (m) | h (m) | E (lx) | ø (m) | h (m) | E (lx) | ø (m) |
| 1 | 32065 | ø0,24 | 1 | 14573 | ø0,44 | 1 | 6431 | ø0,74 |
| 2 | 8016 | ø0,49 | 2 | 3643 | ø0,87 | 2 | 1607 | ø1,48 |
| 3 | 3562 | ø0,73 | 3 | 1619 | ø1,31 | 3 | 714 | ø2,22 |
| 4 | 2004 | ø0,97 | 4 | 910 | ø1,75 | 4 | 401 | ø2,96 |
| 5 | 1282 | ø1,21 | 5 | 582 | ø2,18 | 5 | 257 | ø3,70 |

Optical accessories

LENSES AND HONEYCOMB LOUVER



| TYPE | Ø-H (mm) | ORDER CODE |
|------------------|----------|-------------------|
| sculpture lens | 105/3 | 0 0 6 - 9 2 2 3 7 |
| flood lens clear | 105/3 | 0 0 6 - 9 2 2 3 8 |
| honeycomb louver | 105/3 | 0 0 6 - 9 3 1 3 2 |

ANTI-GLARE ADAPTOR



| TYPE | Ø-H (mm) | ORDER CODE |
|-----------|----------|-------------------|
| white 65° | 106/65 | 0 0 5 - 0 7 1 0 7 |
| black 65° | 106/65 | 0 0 5 - 0 7 1 0 8 |
| white | 106/65 | 0 0 5 - 0 7 1 1 7 |
| black | 106/65 | 0 0 5 - 0 7 1 1 8 |

Inspiration

Kastner & Öhler
Ried im Innkreis, Austria

PRODUCT
TRACK 3-phase suspended
ARGO

ARCHITECT
BLOCHER BLOCHER Partners
Stuttgart, Germany

LIGHTING DESIGN
VEDDER.LICHTMANAGEMENT
Munich, Germany





PABLO

basic/focus

xal.com/pablo



Quickinfo

GENERAL

track light
IP20

LED

COB LED module
up to 91lm/W
3000 K, 4000 K
CRI ≥ 90
Binning initial ≤ 2 MacAdam

ESTIMATED LED LIFETIME

L80/50 000 h

OPTICAL BASIC

direct illumination
beam angle 6, 12, 24, 39, 58°, asym.
beam angle (focus) 17–47°

ELECTRICAL

non DIM, DIM DALI

PHYSICAL

aluminium
powder-coated

Description

ES Proyector de carril; superficie con recubrimiento de pintura en polvo en colores blanco o negro; giratorio 342° y orientable 310°; Convertidor montado en carcasa de proyector de aluminio; con tecnología COB (Chip on Board) para proporcionar una máxima eficiencia; no proporciona sombras múltiples; LEDs de alta eficiencia que proporcionan una alta reproducción cromática; binning inicial ≤ 2 MacAdam; disponible en 3000 K y 4000 K; CRI ≥ 90; min. 80% de flujo luminoso después de 50.000 horas de vida útil; PABLO basic: reflector de aluminio de alta calidad con diseño facetado esférico; anodizado en brillo intenso; característica de emisión precisa con cinco ángulos de emisión diferentes o una distribución asimétrica de luz; puede instalarse y cambiarse sin herramientas; PABLO focus: incluye lente de vidrio plano-convexa de alta calidad; enfoque exacto del objeto mediante lente ajustable; ángulo de emisión ajustable de 17° a 47°; enfoque por medio de anillo de ajuste engomado en el cabezal del proyector; protección IP20; CP I; adaptador para instalación sin herramientas y facilita el desplazamiento en diferentes carriles de 3 fases; opcional dimable DALI

FR Spot sur rail en fonte d'aluminium injectée; surface thermolaquée blanche ou noir; rotatif à 342° et orientable à 310°; Convertisseur installé dans boîtier de spot en aluminium; avec technologie COB (Chip on Board) pour efficacité maximale; pas de formation d'ombres multiples; LED économes en énergie à restitution de couleur élevée; binning initial ≤ 2 MacAdam; livrable dans les couleurs de lumière 3000 K et 4000 K; CRI ≥ 90; min. 80% du flux lumineux au bout de 50000 h de durée de vie; PABLO basic: réflecteur de haute qualité en aluminium avec optique sphérique à facettes; anodisé brillant; caractéristiques précises de rayonnement avec cinq angles différents de rayonnement ou une distribution de lumière asymétrique; peut être installé ou changé sans outil; PABLO focus: lentille de verre plan-convexe de haute qualité incluse; focalisation précise sur les objets par lentille ajustable; angle de rayonnement réglable de 17 à 47°; focalisation au moyen d'une bague de réglage caoutchoutée sur la tête du projecteur; genre protection IP20; CP I; Adaptateur pour installation ou déplacement sans outil dans différents rails triphasés; en option gradable DALI

TRACK

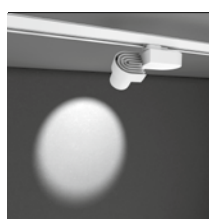
page 746



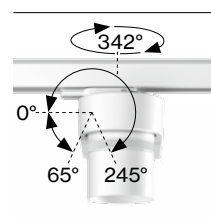
Features



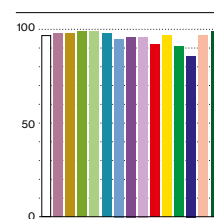
adjustable beam angle 17–47° (PABLO focus)



asymmetric illumination



342° rotatable and 245°/65° tiltable



CRI ≥ 90 (R9 > 90) ≤ 2 step MacAdam

Standard configuration

COLOUR TEMPERATURE ⬢⬢
3000K 5

CONTROL ⬢
non DIM 1

MATERIAL COLOUR ▣
white 7



REFLECTOR ▲
flood 39° F

Extended configuration

COLOUR TEMPERATURE ⬢⬢
4000K 6

CONTROL ⬢
DIM DALI 3

MATERIAL COLOUR ▣
black 8

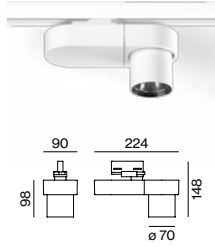


+5% surcharges

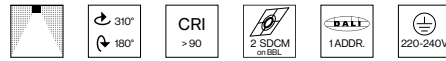
REFLECTOR ▲
super spot 6° (only for 11W) V
spot 12° S
medium 24° M
wide flood 58° W
wallwasher A

Options on request

REFLECTOR
oval flood



PABLO basic



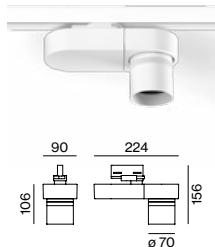
| SYSTEM POWER | COLOUR TEMP. | LUMINOUS FLUX | ORDER CODE |
|--------------|--------------|---------------|--|
| 11 W | 3000K | 610lm | 0 8 0 - 5 1 1 0 ⬢⬢ ▣ ▲ V |
| | 4000K | 660lm | |
| 14 W | 3000K | 1190lm | 0 8 0 - 5 1 1 0 ⬢⬢ ▣ ▲ |
| | 4000K | 1270lm | |
| 26 W | 3000K | 1950lm | 0 8 0 - 5 1 1 1 ⬢⬢ ▣ ▲ |
| | 4000K | 2080lm | |

luminous flux spot 12°

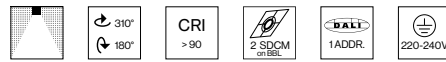
LIGHT DISTRIBUTION for 26W, 3000K

| super spot 6° | | | spot 12° | | | medium 24° | | |
|---------------|--------|-------|----------|--------|-------|------------|--------|-------|
| h (m) | E (lx) | ø (m) | h (m) | E (lx) | ø (m) | h (m) | E (lx) | ø (m) |
| 1 | 42903 | ø0,10 | 1 | 23958 | ø0,20 | 1 | 7827 | ø0,42 |
| 2 | 10725 | ø0,21 | 2 | 5989 | ø0,40 | 2 | 1956 | ø0,84 |
| 3 | 4767 | ø0,31 | 3 | 2662 | ø0,60 | 3 | 869 | ø1,27 |
| 4 | 2681 | ø0,41 | 4 | 1497 | ø0,81 | 4 | 489 | ø1,69 |
| 5 | 1716 | ø0,51 | 5 | 958 | ø1,01 | 5 | 313 | ø2,11 |

| flood 39° | | | wide flood 58° | | | wallwasher | | |
|-----------|--------|-------|----------------|--------|-------|------------|--------|-------|
| h (m) | E (lx) | ø (m) | h (m) | E (lx) | ø (m) | h (m) | E (lx) | ø (m) |
| 1 | 3627 | ø0,70 | 1 | 2223 | ø1,12 | 1 | 1163 | ø1,18 |
| 2 | 906 | ø1,41 | 2 | 555 | ø2,24 | 2 | 290 | ø2,36 |
| 3 | 403 | ø2,11 | 3 | 247 | ø3,35 | 3 | 129 | ø3,54 |
| 4 | 226 | ø2,82 | 4 | 138 | ø4,47 | 4 | 72 | ø4,72 |
| 5 | 145 | ø3,52 | 5 | 88 | ø5,59 | 5 | 46 | ø5,90 |



PABLO focus



| SYSTEM POWER | COLOUR TEMP. | LUMINOUS FLUX | ORDER CODE |
|--------------|--------------|---------------|--|
| 14 W | 3000K | 870lm | 0 8 0 - 5 2 1 0 ⬢⬢ ▣ ▲ |
| | 4000K | 930lm | |
| 23 W | 3000K | 1260lm | 0 8 0 - 5 2 1 1 ⬢⬢ ▣ ▲ |
| | 4000K | 1360lm | |

LIGHT DISTRIBUTION for 23W, 3000K

| min. angle 17° | | | max. angle 47° | | |
|----------------|--------|-------|----------------|--------|-------|
| h (m) | E (lx) | ø (m) | h (m) | E (lx) | ø (m) |
| 1 | 5316 | ø0,30 | 1 | 2187 | ø0,87 |
| 2 | 1329 | ø0,60 | 2 | 546 | ø1,74 |
| 3 | 590 | ø0,89 | 3 | 243 | ø2,60 |
| 4 | 332 | ø1,19 | 4 | 136 | ø3,47 |
| 5 | 212 | ø1,49 | 5 | 87 | ø4,34 |

Inspiration

Private Gallery
Graz, Austria

PRODUCT
TRACK 3-phase surface
PABLO focus





PABLO

shutter/ iris/ gobo

xal.com/pablo



Quickinfo

GENERAL

track light
IP20

LED

COB LED module
up to 1463cd
3000 K, 4000 K
CRI ≥ 90
Binning initial ≤ 2 MacAdam

ESTIMATED LED LIFETIME

L80/50 000 h

OPTICAL

direct illumination
form illumination

ELECTRICAL

non DIM, DIM DALI

PHYSICAL

aluminium
powder-coated

Description

ES Proyector de carril; superficie con recubrimiento de pintura en polvo en colores blanco o negro; giratorio 342° y orientable 310°; Convertidor montado en carcasa de proyector de aluminio; con tecnología COB (Chip on Board) para proporcionar una máxima eficiencia; no proporciona sombras múltiples; LEDs de alta eficiencia que proporcionan una alta reproducción cromática; binning inicial ≤ 2 MacAdam; disponible en 3000 K y 4000 K; CRI ≥ 90; min. 80% de flujo luminoso después de 50.000 horas de vida útil; proyector de contorno para conseguir una forma rectangular o redonda exacta; ajuste sencillo con 4 elementos de ensombrecimiento o con ensombrecedor en forma de iris de acero inoxidable; incluida lente biconvexa de alta calidad; enfoque nítido del objeto a través de una optica ajustable; enfoque realizado manualmente mediante una pieza ubicada en el cabezal proyector; protección IP20; CP I; adaptador para instalación sin herramientas y facilita el desplazamiento en diferentes carriles de 3 fases; opcional dimable DALI

FR Spot sur rail en fonte d'aluminium injectée; surface thermolaquée blanche ou noir; rotatif à 342° et orientable à 310°; Convertisseur installé dans boîtier de spot en aluminium; avec technologie COB (Chip on Board) pour efficacité maximale; pas de formation d'ombres multiples; LED économes en énergie à restitution de couleur élevée; binning initial ≤ 2 MacAdam; livrable dans les couleurs de lumière 3000 K et 4000 K; CRI ≥ 90; min. 80% du flux lumineux au bout de 50000 h de durée de vie; projecteur de contours pour la création de formes précises, rectangulaires ou rondes; réglage simple par 4 éléments obscurcissants ou élément obscurcissant en forme d'iris en inox; incl. lentille verre biconvexe grande qualité; focalisation nette sur objet par lentille ajustable; Focalisation par bague de réglage à gomme sur tête de spot; genre protection IP20; CP I; Adaptateur pour installation ou déplacement sans outil dans différents rails triphasés; en option gradable DALI

TRACK

[page 746](#)



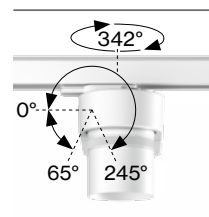
Features



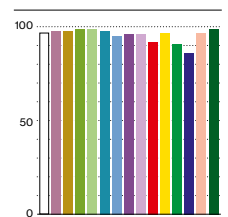
shutter element
(PABLO shutter)



adjustable lens



342° rotatable and
245°/65° tiltable



CRI ≥ 90 (R9 > 90)
≤ 2 step MacAdam

Standard configuration

COLOUR TEMPERATURE ⋮
3000 K 5

CONTROL ⬇
non DIM 1

MATERIAL COLOUR ☑
white 7



Extended configuration

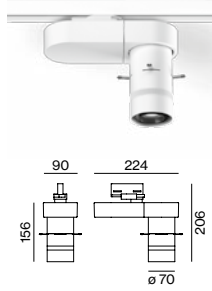
COLOUR TEMPERATURE ⋮
4000 K 6

CONTROL ⬇
DIM DALI 3

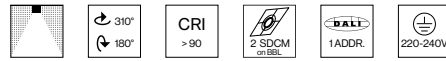
MATERIAL COLOUR ☑
black 8



+5% surcharges



PABLO shutter



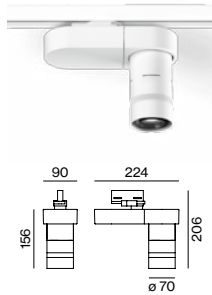
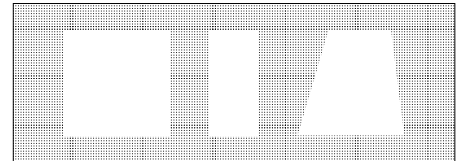
| SYSTEM POWER | COLOUR TEMP. | LUM. INTENSITY | ORDER CODE |
|--------------|--------------|----------------|---|
| 14 W | 3000 K | 946 cd | 0 8 0 - 5 3 1 0 ⋮ ☑ ☑ |
| | 4000 K | 1015 cd | |
| 23 W | 3000 K | 1375 cd | 0 8 0 - 5 3 1 1 ⋮ ☑ ☑ |
| | 4000 K | 1476 cd | |

illuminance (lux) = luminous intensity (cd) / distance (m)²

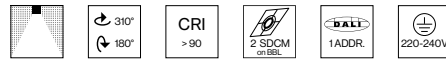
LIGHT DISTRIBUTION for 23W, 3000K

adjustable possible forms of illumination

| h (m) | E (lx) | ø (m) |
|-------|--------|-------|
| 1 | 1196 | ø0,56 |
| 2 | 299 | ø1,12 |
| 3 | 132 | ø1,68 |
| 4 | 74 | ø2,24 |
| 5 | 47 | ø2,79 |



PABLO iris



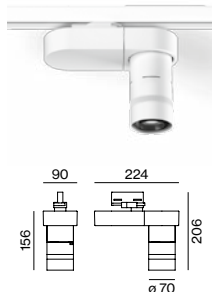
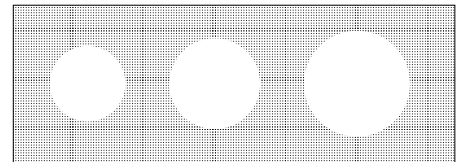
| SYSTEM POWER | COLOUR TEMP. | LUM. INTENSITY | ORDER CODE |
|--------------|--------------|----------------|---|
| 14 W | 3000 K | 969 cd | 0 8 0 - 5 4 1 0 ⋮ ☑ ☑ |
| | 4000 K | 1040 cd | |
| 23 W | 3000 K | 1409 cd | 0 8 0 - 5 4 1 1 ⋮ ☑ ☑ |
| | 4000 K | 1512 cd | |

illuminance (lux) = luminous intensity (cd) / distance (m)²

LIGHT DISTRIBUTION for 23W, 3000K

adjustable possible forms of illumination

| h (m) | E (lx) | ø (m) |
|-------|--------|-------|
| 1 | 1363 | ø0,57 |
| 2 | 340 | ø1,12 |
| 3 | 151 | ø1,70 |
| 4 | 85 | ø2,26 |
| 5 | 54 | ø2,83 |



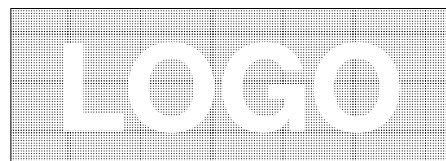
PABLO gobo



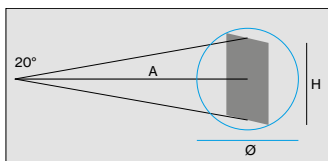
| SYSTEM POWER | COLOUR TEMP. | LUM. INTENSITY | ORDER CODE |
|--------------|--------------|----------------|------------|
| 14 W | 3000 K | - | on request |
| | 4000 K | - | |

LIGHT DISTRIBUTION

possible forms of illumination



Illumination size



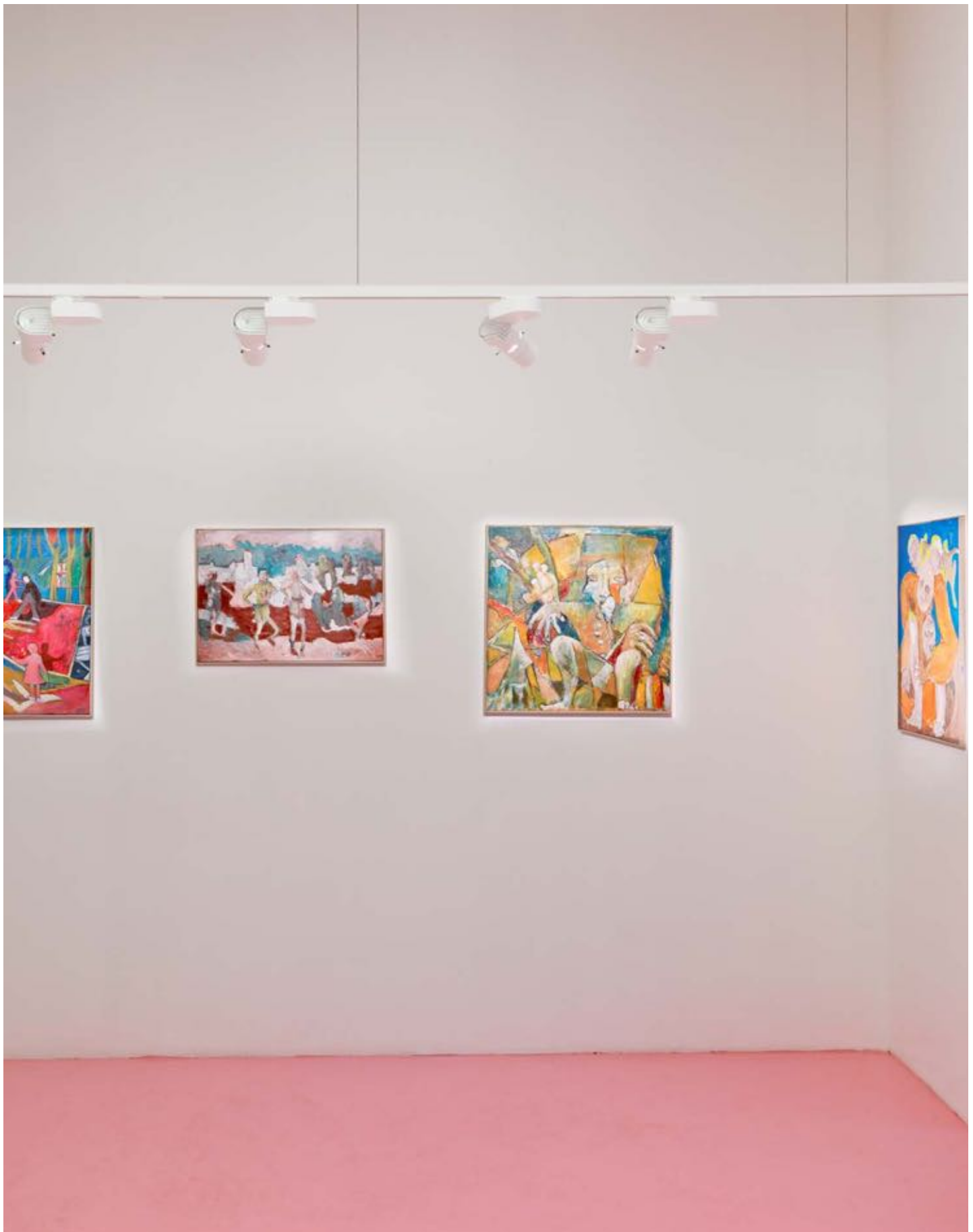
| A (mm) | H (mm) | ø (mm) |
|--------|--------|--------|
| 1000 | 396 | 560 |
| 2000 | 792 | 1120 |
| 3000 | 1188 | 1680 |

Inspiration

Gallery Ursula Stross
Graz, Austria

PRODUCT
TRACK 3-phase suspended
PABLO iris
PABLO shutter





VARO

xal.com/varo



Quickinfo

GENERAL

track light

IP20

mounting accessories

LED

COB LED module

up to 100lm/W

3000K, 4000K

CRI ≥ 90

Binning initial ≤ 3 MacAdam

ESTIMATED LED LIFETIME

L80/50000h

OPTICAL

direct illumination

beam angle 14°, 23°, 39°

optical accessories

ELECTRICAL

non DIM

PHYSICAL

aluminium

powder-coated

TRACK

[page 746](#)



Description

ES Foco de carril conductor de fundición inyectada de aluminio en 2 tamaños distintos; superficie con recubrimiento de pintura en polvo en colores blanco, gris o negro; giratorio 355° y orientable en 90°; Convertidor montado en carcasa de proyector de aluminio; con tecnología COB (Chip on Board) para proporcionar una máxima eficiencia; no proporciona sombras múltiples; LEDs de alta eficiencia que proporcionan una alta reproducción cromática; conmutador Powerswitch (2 niveles de potencia) regulable en el foco de VARO 110; binning inicial ≤ 3 MacAdam; disponible en 3000K y 4000K; CRI ≥ 90; min. 80% de flujo luminoso después de 50.000 horas de vida útil; reflector alta calidad con óptica de bisel esférica; proyección precisa con tres ángulos diferentes; intercambiable sin herramienta; protección IP20; CP I; adaptador para instalación sin herramientas y facilita el desplazamiento en diferentes carriles de 3 fases

FR Spots sur rail en fonte d'aluminium, disponible dans 2 tailles; surface thermolaquée blanche, grise ou noire; rotatif à 355° et orientable à 90°; Convertisseur installé dans boîtier de spot en aluminium; avec technologie COB (Chip on Board) pour efficacité maximale; pas de formation d'ombres multiples; LED économes en énergie à restitution de couleur élevée; powerswitch (2 niveaux de puissance distincts) réglable sur VARO 110 sur spot; binning initial ≤ 3 MacAdam; livrable dans les couleurs de lumière 3000K et 4000K; CRI ≥ 90; min. 80% du flux lumineux au bout de 50000h de durée de vie; réflecteur de grande qualité avec optique facette sphérique; caractéristique de rayonnement précise avec trois angles de diffusion différents; Installation resp. remplacement sans outil; genre protection IP20; CP I; Adaptateur pour installation ou déplacement sans outil dans différents rails triphasés

Features



power switch (only for VARO)

Standard configuration

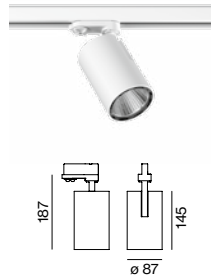
COLOUR TEMPERATURE ⬢⬢
3000K 5

CONTROL
non DIM

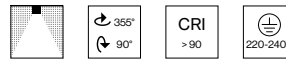
MATERIAL COLOUR ▣
white 7



BEAM ANGLE ▲
flood 39° F



VARO 80



| | | | |
|-----------------------------|---|--|---|
| SYSTEM POWER 29 W | COLOUR TEMP. 3000 K 4000 K | LUMINOUS FLUX 2540 lm 2730 lm | ORDER CODE 0 8 0 - 6 2 1 0 ⬢⬢ 1 ▲ |
|-----------------------------|---|--|---|

luminous flux medium 23° / available from Q3/18

LIGHT DISTRIBUTION for 29 W, 3000 K

| spot 19° | | | medium 28° | | | flood 37° | | |
|----------|--------|--------|------------|--------|--------|-----------|--------|--------|
| h (m) | E (lx) | ø (m) | h (m) | E (lx) | ø (m) | h (m) | E (lx) | ø (m) |
| 1 | 11866 | ø 0,34 | 1 | 8471 | ø 0,50 | 1 | 5906 | ø 0,66 |
| 2 | 2966 | ø 0,68 | 2 | 2117 | ø 1,00 | 2 | 1476 | ø 1,32 |
| 3 | 1318 | ø 1,02 | 3 | 941 | ø 1,50 | 3 | 656 | ø 1,99 |
| 4 | 741 | ø 1,36 | 4 | 529 | ø 2,00 | 4 | 369 | ø 2,65 |
| 5 | 474 | ø 1,70 | 5 | 338 | ø 2,50 | 5 | 236 | ø 3,31 |

Extended configuration

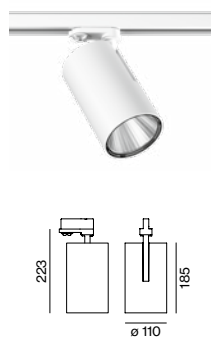
COLOUR TEMPERATURE ⬢⬢
4000K 6

MATERIAL COLOUR ▣
grey 6
black 8

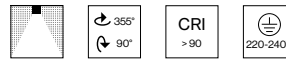


+5% surcharges

BEAM ANGLE ▲
spot 14° S
medium 23° M



VARO 110



| | | | |
|----------------------------------|---|--|---|
| SYSTEM POWER 33 / 44 W | COLOUR TEMP. 3000 K 4000 K | LUMINOUS FLUX 3020 / 3590 lm 3260 / 3870 lm | ORDER CODE 0 8 0 - 6 1 1 0 ⬢⬢ 1 ▲ |
|----------------------------------|---|--|---|

luminous flux medium 23°

LIGHT DISTRIBUTION for 44 W, 3000 K

| spot 14° | | | medium 23° | | | flood 39° | | |
|----------|--------|--------|------------|--------|--------|-----------|--------|--------|
| h (m) | E (lx) | ø (m) | h (m) | E (lx) | ø (m) | h (m) | E (lx) | ø (m) |
| 1 | 24643 | ø 0,25 | 1 | 13272 | ø 0,41 | 1 | 6798 | ø 0,72 |
| 2 | 6160 | ø 0,50 | 2 | 3318 | ø 0,82 | 2 | 1699 | ø 1,43 |
| 3 | 2738 | ø 0,75 | 3 | 1474 | ø 1,24 | 3 | 755 | ø 2,15 |
| 4 | 1540 | ø 1,00 | 4 | 829 | ø 1,65 | 4 | 424 | ø 2,87 |
| 5 | 985 | ø 1,25 | 5 | 530 | ø 2,06 | 5 | 271 | ø 3,58 |

Options on request

SPECIAL COLOUR

| | |
|-------------------|----------|
| vogue | CRI ≥ 90 |
| gallery | CRI 98 |
| gourmet | CRI ≥ 80 |
| fresh meat & fish | CRI ≥ 80 |
| pastry | CRI ≥ 80 |
| brilliant white | CRI ≥ 90 |

REFLECTOR

wide flood 67°

Optical accessories

LENSES AND HONEYCOMB LOUVER

| | | |
|---------------------------------|-------------------------|--|
| TYPE honeycomb louver | Ø-H (mm) 95/3 | ORDER CODE 0 0 6 - 9 3 1 3 0 |
|---------------------------------|-------------------------|--|

Inspiration

Vendrella Store
Munich, Germany

ARCHITECT
Gruschwitz
Munich, Germany

PRODUCT
TRACK 3-phase suspended
VARO





STUDIO

xal.com/studio



Quickinfo

GENERAL

track light

IP20

mounting accessories

LED

COB LED module

up to 104lm/W

3000K, 4000K

CRI ≥ 90

Binning initial ≤ 3 MacAdam

ESTIMATED LED LIFETIME

L80/50000h

OPTICAL

direct illumination

beam angle 14°, 25°, 41°

optical accessories

ELECTRICAL

non DIM, DIM DALI

PHYSICAL

aluminium

powder-coated

Description

ES Proyector de carril; Convertidor montado en carcasa de proyector de aluminio; proyector giratorio 355°; cabezal proyector orientable 85°; superficie con recubrimiento de pintura en polvo en colores blanco, gris o negro; los accesorios ópticos están disponibles como accesorios; refrigeración pasiva de LEDs; con tecnología COB (Chip on Board) para proporcionar una máxima eficiencia; no proporciona sombras múltiples; LEDs de alta eficiencia que proporcionan una alta reproducción cromática; binning inicial ≤ 3 MacAdam; disponible en 3000K y 4000K; CRI ≥ 90; min. 80% de flujo luminoso después de 50.000 horas de vida útil; reflector de aluminio de alta calidad con óptica de bisel esférica; anodizado en brillo; proyección precisa con tres ángulos diferentes; intercambiable sin herramienta; protección IP20; CP I; adaptador para instalación sin herramientas y facilita el desplazamiento en diferentes carriles de 3 fases; opcional dimable DALI

FR Spot sur rail en fonte d'aluminium injectée; Convertisseur installé dans boîtier de spot en aluminium; Spot rotatif à 355°; Tête de spot orientable à 85°; surface thermolaquée blanche, grise ou noire; éléments optiques disponibles comme accessoires; refroidissement passif de LED par géométrie dissipateur thermique optimisée; avec technologie COB (Chip on Board) pour efficacité maximale; pas de formation d'ombres multiples; LED économes en énergie à restitution de couleur élevée; binning initial ≤ 3 MacAdam; livrable dans les couleurs de lumière 3000K et 4000K; CRI ≥ 90; min. 80% du flux lumineux au bout de 50000h de durée de vie; Réflecteur aluminium de grande qualité avec optique facette sphérique; anodisé haute brillance; caractéristique de rayonnement précise avec trois angles de diffusion différents; Installation resp. remplacement sans outil; genre protection IP20; CP I; Adaptateur pour installation ou déplacement sans outil dans différents rails triphasés; en option gradable DALI

TRACK

[page 746](#)



Standard configuration

COLOUR TEMPERATURE ◆◆
3000K 5

CONTROL ◆
non DIM 1

MATERIAL COLOUR ■
white 7

7

BEAM ANGLE ▲
flood 41° F

Extended configuration

COLOUR TEMPERATURE ◆◆
4000K 6

CONTROL ◆
DIM DALI 3

MATERIAL COLOUR ■
grey 6
black 8

6 8

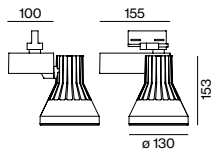
+5% surcharges

BEAM ANGLE ▲
spot 14° S
medium 25° M

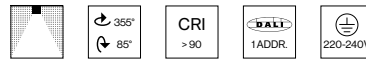
Options on request

SPECIAL COLOUR
vogue CRI ≥ 90
gallery CRI 98
gourmet CRI ≥ 80
fresh meat & fish CRI ≥ 80
pastry CRI ≥ 80
brilliant white CRI ≥ 90

REFLECTOR
wide flood 58°



STUDIO



| SYSTEM POWER | COLOUR TEMP. | LUMINOUS FLUX | ORDER CODE |
|--------------|--------------|---------------|--|
| 29 W | 3000 K | 2670 lm | 0 5 3 - 7 9 2 1 ◆◆ ▲ |
| 44 W | 4000 K | 2860 lm | |
| 44 W | 3000 K | 3590 lm | 0 5 3 - 7 9 2 2 ◆◆ ▲ |
| 44 W | 4000 K | 3850 lm | |
| 52 W | 3000 K | 4270 lm | 0 5 3 - 7 9 2 3 ◆◆ ▲ |
| 52 W | 4000 K | 4580 lm | |

luminous flux medium 25°

LIGHT DISTRIBUTION for 52W, 3000K

| spot 14° | | | medium 25° | | | flood 41° | | |
|----------|--------|-------|------------|--------|-------|-----------|--------|-------|
| h (m) | E (lx) | ø (m) | h (m) | E (lx) | ø (m) | h (m) | E (lx) | ø (m) |
| 1 | 38175 | ø0,24 | 1 | 17350 | ø0,44 | 1 | 7656 | ø0,74 |
| 2 | 9543 | ø0,49 | 2 | 4337 | ø0,87 | 2 | 1914 | ø1,48 |
| 3 | 4241 | ø0,73 | 3 | 1927 | ø1,31 | 3 | 850 | ø2,22 |
| 4 | 2385 | ø0,97 | 4 | 1084 | ø1,75 | 4 | 478 | ø2,96 |
| 5 | 1527 | ø1,21 | 5 | 694 | ø2,18 | 5 | 306 | ø3,70 |

Optical accessories

LENSES AND HONEYCOMB LOUVER



| TYPE | Ø-H (mm) | ORDER CODE |
|------------------|----------|-------------------|
| sculpture lens | 105/3 | 0 0 6 - 9 2 2 3 7 |
| flood lens clear | 105/3 | 0 0 6 - 9 2 2 3 8 |
| honeycomb louver | 105/4 | 0 0 6 - 9 3 1 3 2 |

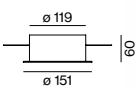
Mounting accessories

SURFACE HOUSING / POINT OUTLET



| COLOUR | ORDER CODE |
|--------|---------------------|
| grey | 3 8 6 - 0 7 2 2 8 6 |
| white | 3 8 6 - 0 7 2 2 8 7 |
| black | 3 8 6 - 0 7 2 2 8 8 |

not use with DIM DALI (on request)



RECESSED HOUSING / POINT OUTLET

ceiling thickness: 0-30 mm

| COLOUR | ORDER CODE |
|--------|---------------------|
| grey | 3 8 6 - 0 7 2 2 7 6 |
| white | 3 8 6 - 0 7 2 2 7 7 |
| black | 3 8 6 - 0 7 2 2 7 8 |

not use with DIM DALI (on request)

Inspiration

Humanic Store
Munich, Germany

PRODUCT
TRACK 3-phase surface
STUDIO

ARCHITECT
Design und Bauabteilung
Leder & Schuh AG
Mag. Hans Michael Heger
Graz, Austria





STRAIGHT

xal.com/straight



Quickinfo

GENERAL

track light

IP20

mounting accessories

LED

COB LED module

up to 86lm/W

3000 K

CRI ≥ 80

Binning initial ≤ 3 MacAdam

ESTIMATED LED LIFETIME

L80/50 000 h

OPTICAL

direct illumination

beam angle 23°, 36°

ELECTRICAL

non DIM

PHYSICAL

aluminium

powder-coated

Description

ES Proyector carril electrificado de aluminio; proyector giratorio 355°; cabezal proyector orientable 85°; superficie con recubrimiento de pintura en polvo en colores blanco o negro; Convertidor montado en carcasa de proyector de aluminio; refrigeración pasiva de LEDs; con tecnología COB (Chip on Board) para proporcionar una máxima eficiencia; no proporciona sombras múltiples; LEDs de alta eficiencia que proporcionan una alta reproducción cromática; binning inicial ≤ 3 MacAdam; disponible en 3000 K; CRI ≥ 80; min. 80% de flujo luminoso después de 50.000 horas de vida útil; lente individual alta calidad; efecto lumínico de alta calidad con dos ángulos de proyección diferentes; protección IP20; CP I; adaptador para instalación sin herramientas y facilita el desplazamiento en diferentes carriles de 3 fases; opcional no atenuable o atenuable con DALI

FR Spot sur rail en aluminium ; Spot rotatif à 355° ; Tête de spot orientable à 85° ; surface thermolaquée blanche ou noir ; Convertisseur installé dans boîtier de spot en aluminium ; refroidissement passif de LED par géométrie dissipateur thermique optimisée ; avec technologie COB (Chip on Board) pour efficacité maximale ; pas de formation d'ombres multiples ; LED économes en énergie à restitution de couleur élevée ; binning initial ≤ 3 MacAdam ; livrable dans la couleur de lumière 3000 K ; CRI ≥ 80 ; min. 80 % du flux lumineux au bout de 50000 h de durée de vie ; Lent. uniq. haute qualité ; caractéristique de rayonnement précise avec deux angles de diffusion différents ; genre protection IP20 ; CP I ; Adaptateur pour installation ou déplacement sans outil dans différents rails triphasés ; en option non gradable ou DALI gradable

TRACK

[page 746](#)



Standard configuration

COLOUR TEMPERATURE
3000 K

CONTROL
non DIM

MATERIAL COLOUR
white 7



BEAM ANGLE ▲
flood 36° F

Extended configuration

MATERIAL COLOUR
black 8



+5% surcharges

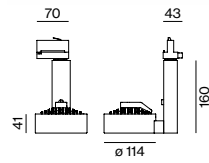
BEAM ANGLE ▲
medium 23° M

Options on request

COLOUR RENDERING INDEX
CRI ≥ 90

COLOUR TEMPERATURE
2700 K

CONTROL
phase-cut DIM



STRAIGHT



| SYSTEM POWER | COLOUR TEMP. | LUMINOUS FLUX | ORDER CODE |
|--------------|--------------|---------------|---|
| 12 W | 3000 K | 1020 lm | 0 8 0 - 2 6 5 6 <input checked="" type="checkbox"/> ▲ |
| 16 W | 3000 K | 1370 lm | 0 8 0 - 2 7 5 6 <input checked="" type="checkbox"/> ▲ |

luminous flux medium 23°

LIGHT DISTRIBUTION for 16 W

| medium 23° | | | flood 36° | | |
|------------|--------|--------|-----------|--------|--------|
| h (m) | E (lx) | Ø (m) | h (m) | E (lx) | Ø (m) |
| 1 | 5369 | Ø 0,40 | 1 | 2484 | Ø 0,65 |
| 2 | 1342 | Ø 0,81 | 2 | 621 | Ø 1,30 |
| 3 | 596 | Ø 1,21 | 3 | 276 | Ø 1,95 |
| 4 | 335 | Ø 1,62 | 4 | 155 | Ø 2,60 |
| 5 | 214 | Ø 2,02 | 5 | 99 | Ø 3,25 |

Optical accessories

LENSES AND HONEYCOMB LOUVER



| TYPE | Ø-H (mm) | ORDER CODE |
|------------------|----------|-------------------|
| sculpture lens | 105-3 | 0 0 6 - 9 2 2 3 7 |
| flood lens clear | 105-3 | 0 0 6 - 9 2 2 3 8 |
| honeycomb louver | 105-3 | 0 0 6 - 9 3 1 3 2 |

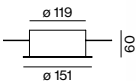
Mounting accessories

SURFACE HOUSING / POINT OUTLET



| COLOUR | ORDER CODE |
|--------|---------------------|
| white | 3 8 6 - 0 7 2 2 8 7 |
| black | 3 8 6 - 0 7 2 2 8 8 |

RECESSED HOUSING / POINT OUTLET



ceiling thickness: 0-30 mm

| COLOUR | ORDER CODE |
|--------|---------------------|
| white | 3 8 6 - 0 7 2 2 7 7 |
| black | 3 8 6 - 0 7 2 2 7 8 |

Inspiration

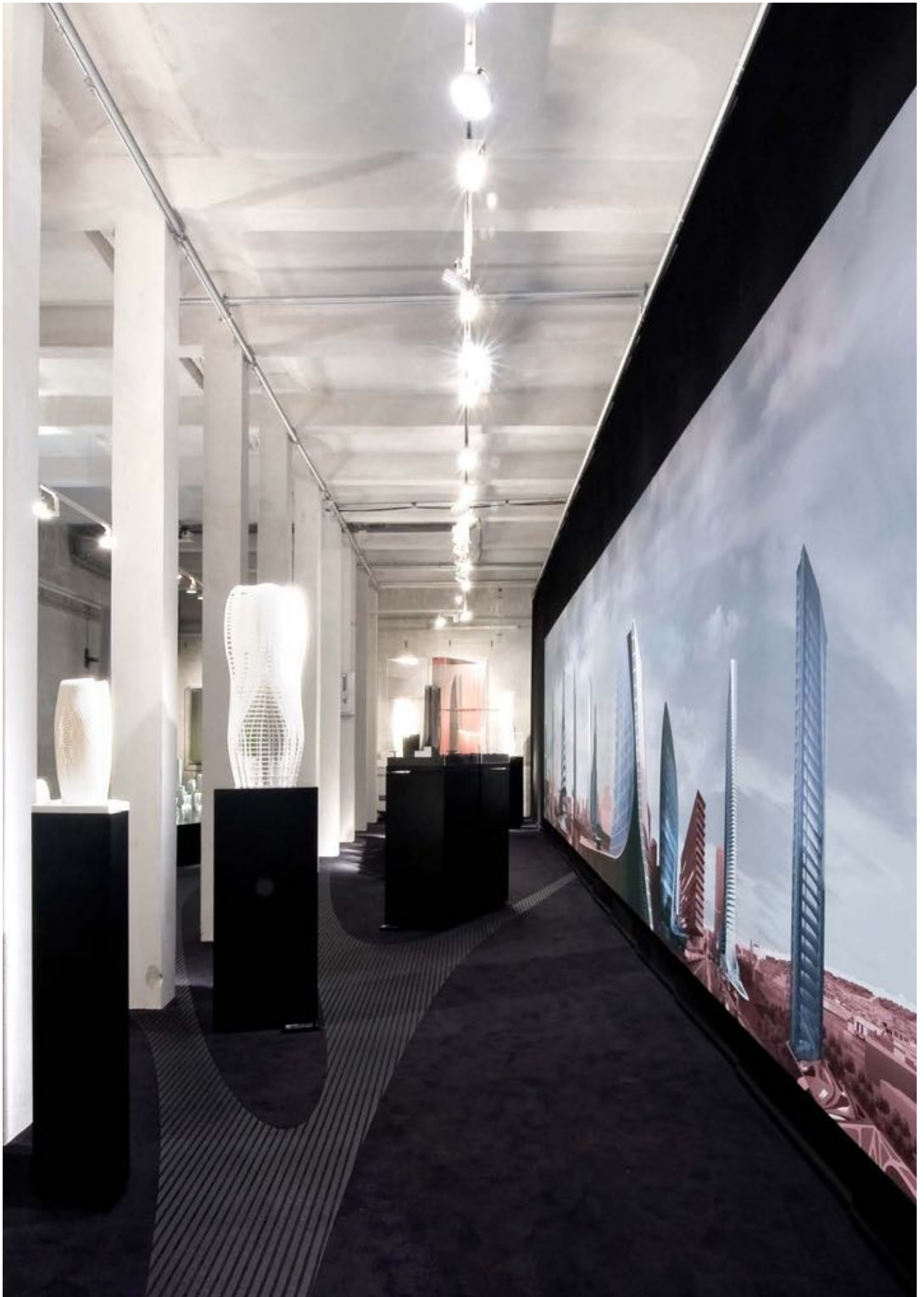
Zaha Hadid
Munich, Germany

ARCHITECT
Zaha Hadid Architects
London, United Kingdom

LIGHTING DESIGN
Nelson licht design
Hamburg, Germany

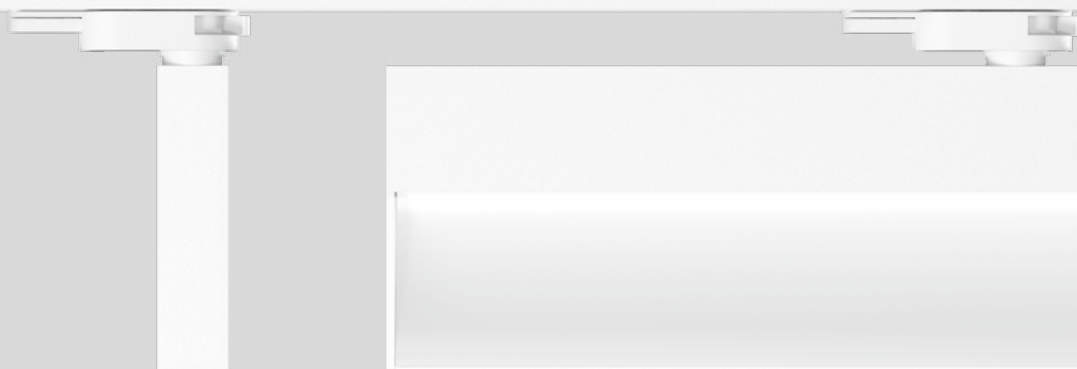
PRODUCT
TRACK 3-phase suspended
STRAIGHT





STRAIGHT wallwasher

xal.com/straight



Quickinfo

GENERAL

track light

IP20

mounting accessories

LED

Mid-power LED

up to 73lm/W

3000K

CRI ≥ 80

Binning initial ≤ 3 MacAdam

ESTIMATED LED LIFETIME

L80/50 000h

OPTICAL

asymmetric light distribution

ELECTRICAL

non DIM, DIM DALI

PHYSICAL

aluminium

powder-coated

adapater plastic

TRACK

[page 746](#)

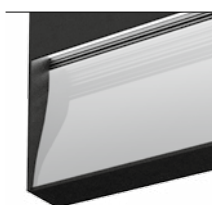


Description

ES Aplique pared de aluminio para montaje en carril; giratorio 355°; superficie con recubrimiento de pintura en polvo en colores blanco o negro; refrigeración pasiva de LEDs; LEDs de alta eficiencia que proporcionan una alta reproducción cromática; binning inicial ≤ 3 MacAdam; disponible en 3000K; CRI ≥ 80; min. 80% de flujo luminoso después de 50.000 horas de vida útil; con reflector especialmente calculado, asimétrico para intensidades de iluminación verticales homogéneas; reflector de aluminio puro anodizado mate; protección IP20; CP I; adaptador para instalación sin herramientas y facilita el desplazamiento en diferentes carriles de 3 fases; opcional dimable DALI

FR Applique murale en alu pour montage sur rail ; rotatif à 355° ; surface thermolaquée blanche ou noir ; refroidissement passif de LED par géométrie dissipateur thermique optimisée ; LED économes en énergie à restitution de couleur élevée ; binning initial ≤ 3 MacAdam ; livrable dans la couleur de lumière 3000K ; CRI ≥ 80 ; min. 80% du flux lumineux au bout de 50000h de durée de vie ; avec réflecteur asymétrique (calcul spécial) pour intensités d'éclairage verticales homogènes ; réflecteur en aluminium pur mat anodisé ; genre protection IP20 ; CP I ; Adaptateur pour installation ou déplacement sans outil dans différents rails triphasés ; en option gradable DALI

Features



pure aluminium
reflector

Standard configuration

COLOUR TEMPERATURE

3000K

CONTROL

non DIM

1

MATERIAL COLOUR

white

7

7

Extended configuration

CONTROL

DIM DALI

3

MATERIAL COLOUR

black

8

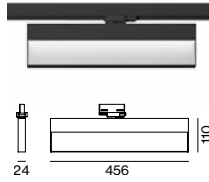
8

+5% surcharges

Options on request

COLOUR RENDERING INDEX

CRI ≥ 90



STRAIGHT wallwasher



SYSTEM POWER
22W

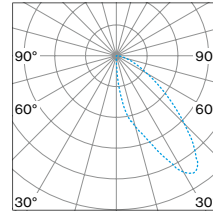
COLOUR TEMP.
3000K

LUMINOUS FLUX
1590lm

ORDER CODE
0 8 0 - 4 0 5 - A

LIGHT DISTRIBUTION

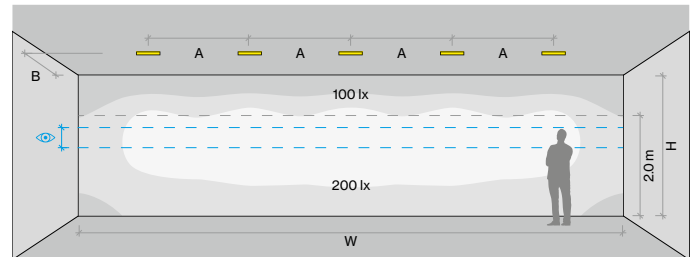
wallwasher



direct

Technical data

STRAIGHT wallwasher, 22 W, 3000 K



ROOM VALUES

Wall dimensions H = 2.8 m | W = 10.8 m
Distance to wall B = 1.3 m
Distance between spotlights A = 2.0 m
Reflection factor 0.7 | 0.5 | 0.2
Maintenance factor 0.8

CALCULATION SURFACE

Surface dimensions 10.8 × 2.8 m
Surface height 0 - 2.8 m
Eye level 1.35 m - 1.75 m

Mounting accessories

SURFACE HOUSING / POINT OUTLET

COLOUR

white

black

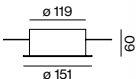
ORDER CODE

3 8 6 - 0 7 2 2 8 7

3 8 6 - 0 7 2 2 8 8



105-114



RECESSED HOUSING / POINT OUTLET

ceiling thickness: 0-30 mm

COLOUR

white

black

ORDER CODE

3 8 6 - 0 7 2 2 7 7

3 8 6 - 0 7 2 2 7 8

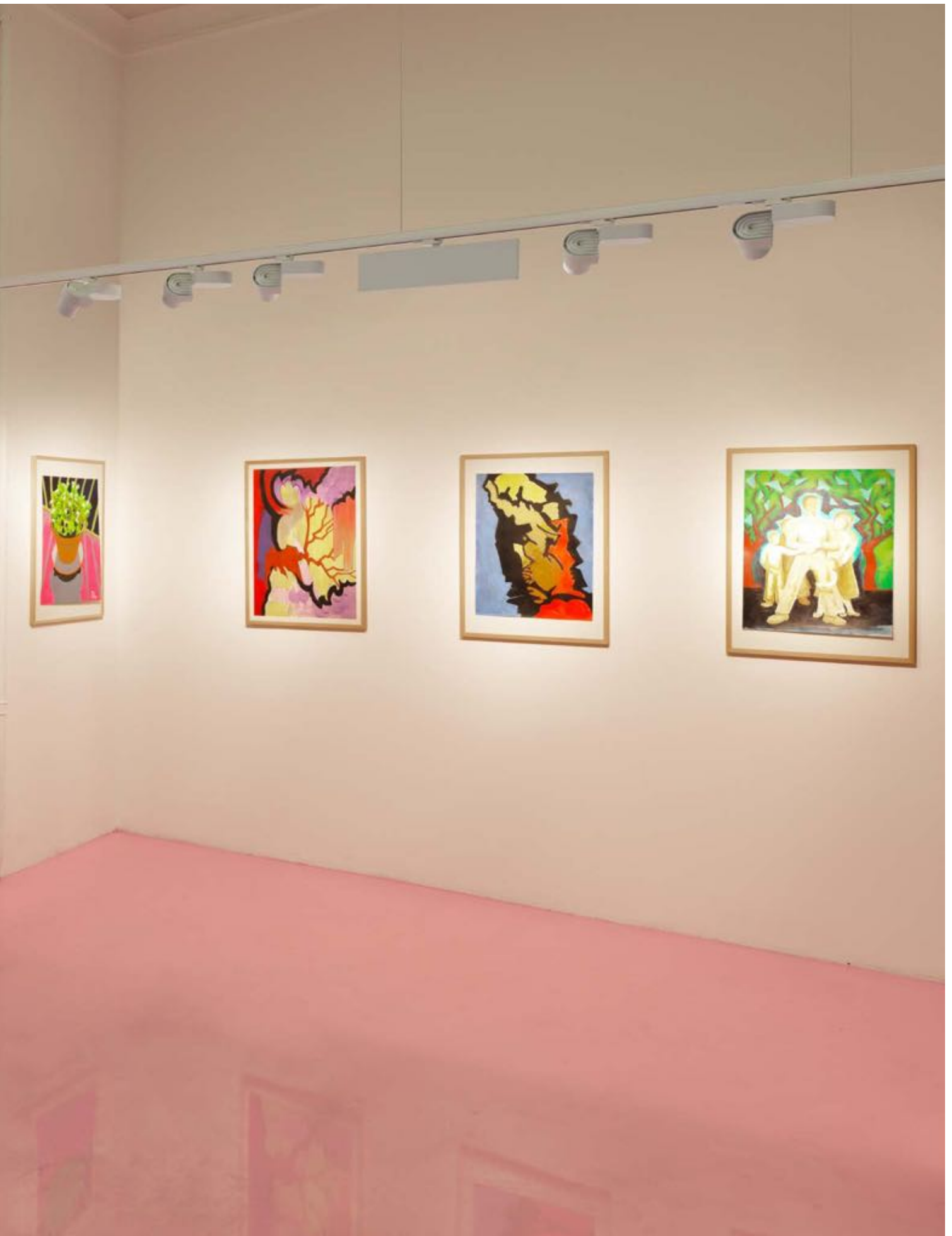
Inspiration

Gallery Ursula Stross
Graz, Austria

PRODUCT

TRACK 3-phase suspended
STRAIGHT wallwasher
PABLO focus

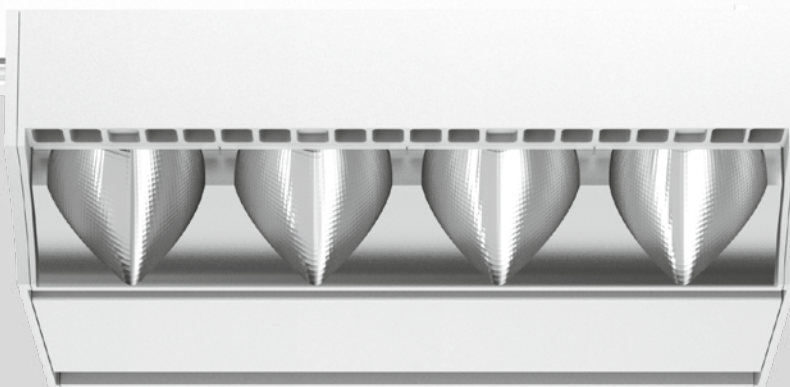




SQUADRO

wallwasher

xal.com/squadro



Quickinfo

GENERAL

tracklight

IP20, IP40

quick installation

LED

COB LED module

up to 14240lm

up to 119lm/W

3000K, 4000K

CRI ≥ 80

Binning initial ≤ 3 MacAdam

ESTIMATED LED LIFETIME

L80/50000h

OPTICAL

direct light 100%

PC/aluminium coated reflector
shelf/wall floor washer

ELECTRICAL

220–240V

non DIM, DIM DALI

PHYSICAL

aluminium

powder-coated

white

TRACK

[page 746](#)

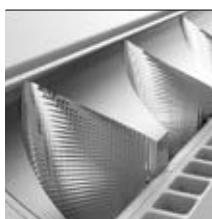


Description

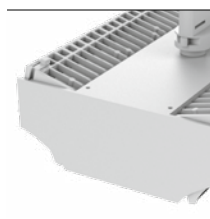
ES Proyector en raíl electrificado de fundición de aluminio en 2 diferentes variantes (de 4 lámparas o bien de 2x4 lámparas) y con 2 módulos de iluminación diferentes (para shelf floor washer und wall floor washer); superficie con recubrimiento de pintura en polvo en colores blanco o negro; Proyector para zonas de pasillos con reflectores especiales de múltiples superficies de formas libres con óptica facetada para una orientación de la luz sumamente precisa; iluminación precisa de estanterías y de zonas de pasillos, evitando de forma óptima el deslumbramiento longitudinal para un elevado confort visual en la zona del pasillo, módulos de iluminación ajustables con cierre; disipador de calor integrado en la luminaria para una óptima gestión térmica del LED; Chip on Board que proporciona una máxima eficiencia; LEDs de alta eficiencia que proporcionan una alta reproducción cromática; binning inicial ≤ 3 MacAdam; disponible en 3000 K y 4000 K; CRI ≥ 80; mín. 80 % de flujo luminoso después de 50.000 horas de vida útil; protección IP20; vidrio de protección IP40 disponible como accesorio; CP I; opcional dimable DALI

FR Spot sur raíl en aluminium moulé en 2 variantes différentes (à 4 lampes ou 2 x 4 lampes) avec deux modules lumineux différents (pour shelf floor washer et wall floor washer) ; surface thermolaquée blanche ou noir ; Spot pour couloirs avec réflecteurs spéciaux multiples dotés d'une technologie à forme libre avec optique à facettes pour un guidage extrêmement précis du flux lumineux ; éclairage précis des étagères et des couloirs, anti-éblouissement longitudinal optimal pour un confort visuel élevé dans les couloirs, modules lumineux réglables avec verrouillage ; Dissipateur thermique intégré à la géométrie des luminaires pour gestion thermique optimale et refroidissement passif des LED ; Technologie COB (Chip on Board) pour efficacité maximale ; LED économes en énergie à restitution de couleur élevée ; binning initial ≤ 3 MacAdam ; livrable dans les couleurs de lumière 3000 K et 4000 K ; CRI ≥ 80 ; min. 80 % du flux lumineux au bout de 50000 h de durée de vie ; genre protection IP20 ; verre de protection IP40 disponible comme accessoire ; CP I ; en option gradable DALI

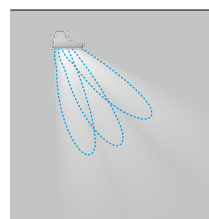
Features



microfaceting



+15° up to -15° tiltable



adjustable light module

Standard configuration

COLOUR TEMPERATURE ◆◆
3000K 5

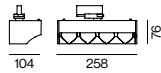
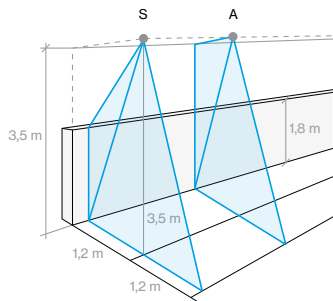
CONTROL ◆
non DIM 1

MATERIAL COLOUR ■
white 7

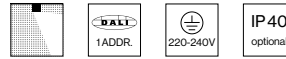


REFLECTOR ▲
shelf floor washer S
wall floor washer A
1x shelf / 1x wall floor washer* B

*only for 2x4 lamps

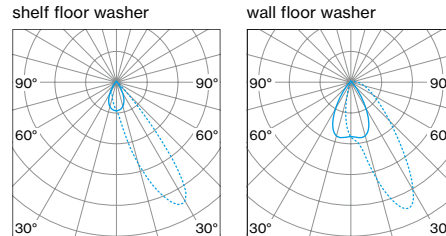


SQUADRO 1x4 lamps, wallwasher



| SYSTEM POWER | COLOUR TEMP. | LUMINOUS FLUX | ORDER CODE |
|--------------|--------------|---------------|--|
| 53W | 3000K | 6040lm | 0 4 9 - 2 2 3 1 ◆◆ ▲ |
| | 4000K | 6300lm | |

LIGHT DISTRIBUTION

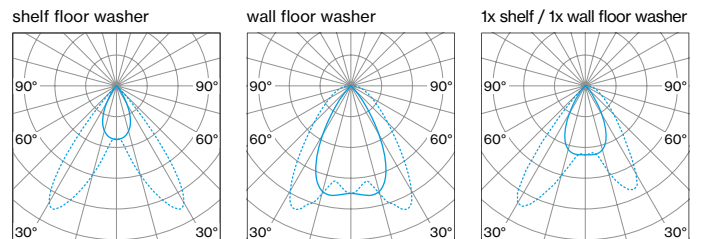


SQUADRO 2x4 lamps, wallwasher



| SYSTEM POWER | COLOUR TEMP. | LUMINOUS FLUX | ORDER CODE |
|--------------|--------------|---------------|--|
| 2x44W | 3000K | 2x5310lm | 0 4 9 - 2 2 4 0 ◆◆ ▲ |
| | 4000K | 2x5540lm | |
| 2x61W | 3000K | 2x6830lm | 0 4 9 - 2 2 4 1 ◆◆ ▲ |
| | 4000K | 2x7120lm | |

LIGHT DISTRIBUTION



Extended configuration

COLOUR TEMPERATURE ◆◆
4000K 6

CONTROL ◆
DIM DALI 3

MATERIAL COLOUR ■
black 8



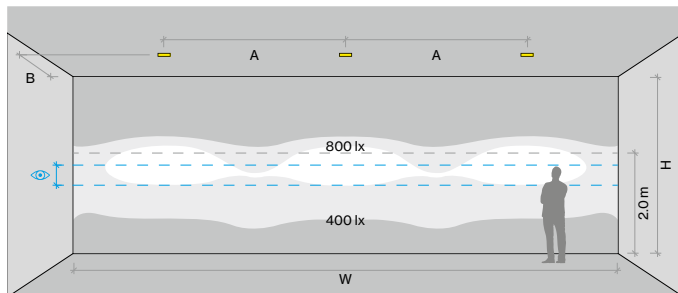
+5% surcharges

Optical accessories

| TYPE | ORDER CODE |
|---|-----------------------|
| IP40 protection glass - single-sided output | 0 4 9 - 2 9 3 0 0 1 0 |
| IP40 protection glass - double-sided output | 0 4 9 - 2 9 4 0 0 1 0 |

Technical data

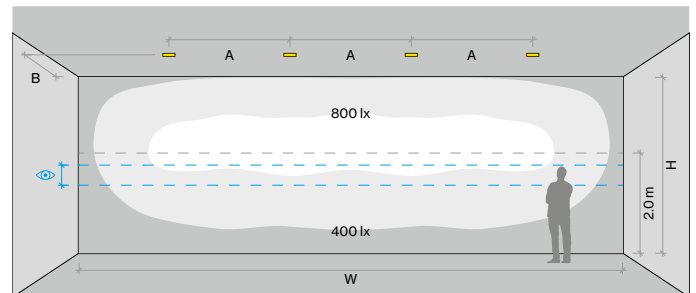
SQUADRO shelf floor washer, +5° tilt, 53W, 3000K



ROOM VALUES
Wall dimensions H = 3.5m | W = 10.8m
Distance to wall B = 1.3m
Distance between spotlights A = 3.6m
Aisle width 2.6m
Reflection factor 0.7 | 0.7 | 0.2
Maintenance factor 0.9

CALCULATION SURFACE
Surface dimensions 10.8x3.5m
Surface height 0 – 3.5m
Eye level 1.35m – 1.75m

SQUADRO wall floor washer, +5° tilt, 53W, 3000K



ROOM VALUES
Wall dimensions H = 3.5m | W = 10.8m
Distance to wall B = 1.3m
Distance between spotlights A = 2.4m
Aisle width 2.6m
Reflection factor 0.7 | 0.7 | 0.2
Maintenance factor 0.9

CALCULATION SURFACE
Surface dimensions 10.8x3.5m
Surface height 0 – 3.5m
Eye level 1.35m – 1.75m

Inspiration

Vitalia health food store
Munich, Germany

PRODUCT
TRACK 3-phase surface
SQUADRO wallwasher

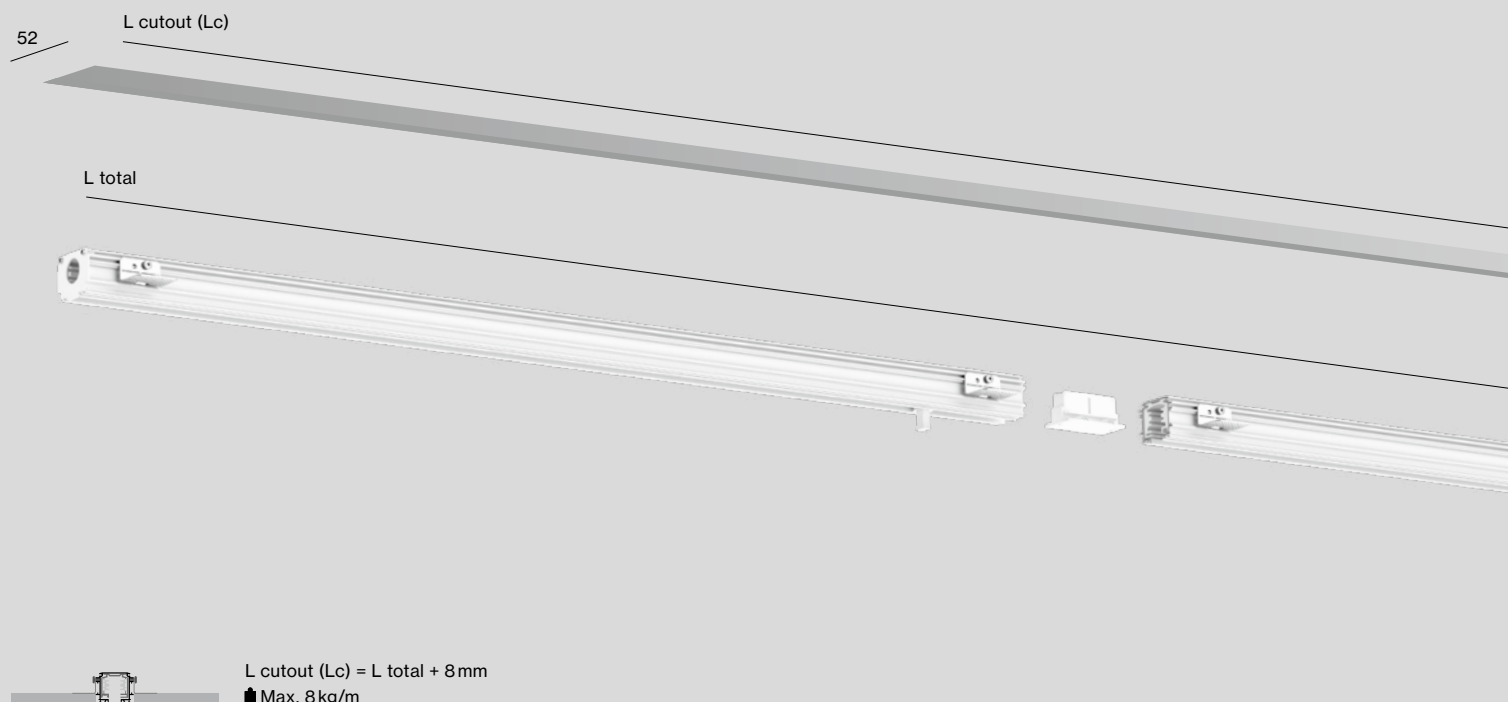




CANYON 15

recessed

xal.com/canyon



Quickinfo

GENERAL

channel recessed

IP20

quick installation

ELECTRICAL

220–240 V

non DIM, DIM DALI

PHYSICAL

aluminium

powder-coated

white, black

Description

ES Perfil de aluminio extruido para el alojamiento de carriles electrificados de 3 fases; superficie con recubrimiento de pintura en polvo en colores blanco o negro; para el montaje sin bordes en techos de escayola, formación especial del borde de contorno con estrías para un mejor agarre de la masa de emplaste; apropiada para grosores de techo entre 12,5-25mm; optimizado para focos BO 55, adaptador a ras de techo; para sistemas de perfiles continuos; opcionalmente conectores flexibles

FR Profilé en aluminium extrudé pour montage de rails triphasés ; surface thermolaquée blanche ou noir ; pour encastrement sans bord en plafonds en placoplâtre, formation de bords spéciaux avec cannelures pour meilleure adhérence du l'enduit ; convient aux épaisseurs de plafond de 12,5-25 mm ; optimisé pour spot BO 55, adaptateur affleurant avec plafond ; pour systèmes profilés continus ; en option connecteur flexible

Features



optimised for track
light BO 55

Standard configuration

CONTROL

non DIM _____

MATERIAL COLOUR

white 7

black 8

7 8

CANYON 15 recessed

CHANNEL

| L (mm) | ORDER CODE |
|------------|---|
| 1075 | 0 3 3 - 6 4 1 0 <input checked="" type="checkbox"/> |
| 2075 | 0 3 3 - 6 4 2 0 <input checked="" type="checkbox"/> |
| custom cut | E 8 2 4 2 0 <input checked="" type="checkbox"/> |

install track in channel before final mounting



END CAPS

| TYPE | ORDER CODE |
|-------|-------------------|
| white | 0 3 3 - 6 4 0 4 7 |
| black | 0 3 3 - 6 4 0 4 8 |



MOUNTING BRACKET

| CEILING THICKNESS (mm) | ORDER CODE |
|------------------------|-------------------|
| 12,5/15/25 | 0 3 3 - 6 4 0 1 0 |

number of brackets required: length of your system in metres+1



LINEAR CONNECTOR

| TYPE | ORDER CODE |
|------------------|-------------------|
| linear connector | 0 3 3 - 6 4 0 2 0 |



TRACK 3-phase



TRACK 240V-16A

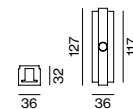
| L (mm) | ORDER CODE |
|--------------------------------|---|
| 1000 | 3 8 6 - 0 1 1 1 1 1 <input checked="" type="checkbox"/> |
| 2000 | 3 8 6 - 0 1 1 2 1 1 <input checked="" type="checkbox"/> |
| 3000 | 3 8 6 - 0 1 1 3 1 1 <input checked="" type="checkbox"/> |
| 4000 | 3 8 6 - 0 1 1 4 1 1 <input checked="" type="checkbox"/> |
| track mounting set (10 pieces) | 0 3 3 - 6 4 0 3 0 |



| | |
|---------|---|
| end cap | 3 8 6 - 0 2 1 0 1 1 <input checked="" type="checkbox"/> |
|---------|---|

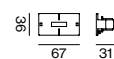


| | |
|----------------|---|
| end feed right | 3 8 6 - 0 2 1 3 1 1 <input checked="" type="checkbox"/> |
| end feed left | 3 8 6 - 0 2 1 4 1 1 <input checked="" type="checkbox"/> |
| middle feed | 3 8 6 - 0 2 0 3 2 1 <input checked="" type="checkbox"/> |

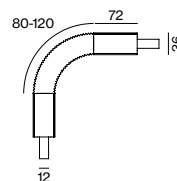


CONNECTORS 240V-16A

| TYPE | ORDER CODE |
|------------------|---|
| linear connector | 3 8 6 - 0 2 1 1 1 1 <input checked="" type="checkbox"/> |

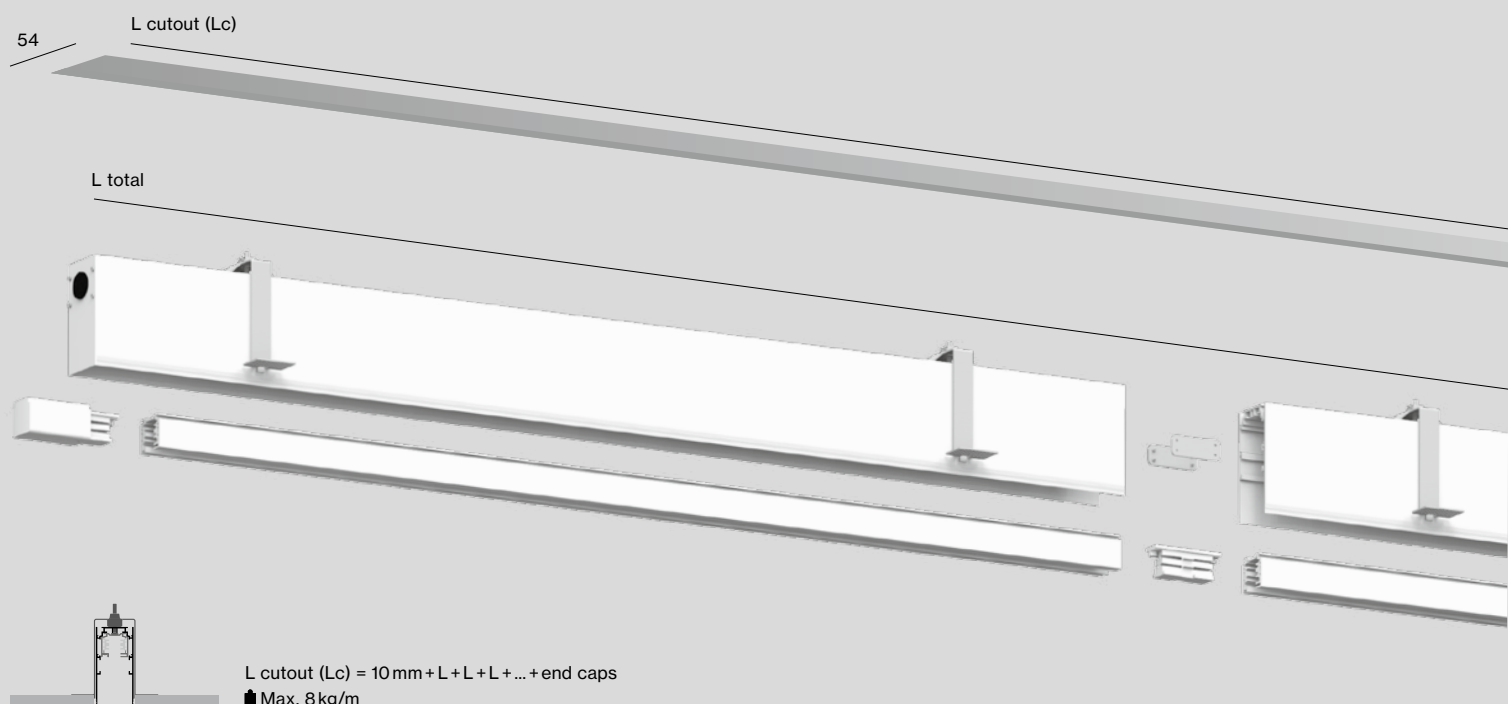


| | |
|----------------------|---|
| adjustable connector | 3 8 6 - 0 2 1 1 6 1 <input checked="" type="checkbox"/> |
|----------------------|---|



CANYON 50 offset

xal.com/canyon



Quickinfo

GENERAL

channel recessed
IP20

ELECTRICAL

220–240 V
non DIM, DIM DALI

PHYSICAL

aluminium
powder-coated
white, black

Description

ES Perfil de aluminio extruido para el alojamiento de carriles electrificados de 3 fases; superficie con recubrimiento de pintura en polvo en colores blanco o negro; nivel del carril conductor retraído; para el montaje sin bordes en techos de escayola, formación especial del borde de contorno con estrías para un mejor agarre de la masa de emplaste; apropiada para grosores de techo entre 8-25 mm; optimizado para focos BO 70, TIMO 80, KIS y ARGO, el adaptador desaparece en el canal; para sistemas de perfiles continuos; conectores angulares de 90° para el montaje rectangular del sistema

FR Profilé en aluminium extrudé pour montage de rails triphasés ; surface thermolaquée blanche ou noir ; niveau de rails conducteurs placé en retrait ; pour encastrement sans bord en plafonds en placoplâtre, formation de bords spéciaux avec cannelures pour meilleure adhérence du l'enduit ; convient aux épaisseurs de plafond de 8-25 mm ; optimisé pour spots BO 70, TIMO 80, KIS et ARGO, adaptateur dissimulé dans le canal ; pour systèmes profilés continus ; équerres de raccordement 90° pour structure de système rectangulaire

Features



optimised for
track lights BO 70,
TIMO 80, KIS, ARGO

Standard configuration

CONTROL
non DIM 1

MATERIAL COLOUR
white 7
black 8



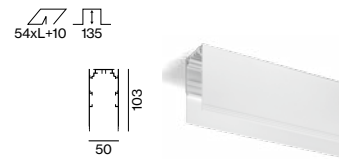
Extended configuration

CONTROL
DIM DALI 3

CANYON 50 offset

INSTALLATION CHANNEL

| L (mm) | ORDER CODE |
|------------|------------|
| 1075 | 033-6510 |
| 2075 | 033-6520 |
| 3000 | 033-6530 |
| custom cut | E82400 |



END CAPS (pair)

| TYPE | ORDER CODE |
|-------|------------|
| white | 033-65047 |
| black | 033-65048 |



MOUNTING BRACKET

| CEILING THICKNESS (mm) | ORDER CODE |
|------------------------|------------|
| 8-15 | 033-65010 |
| 18-25 | 033-65011 |

number of brackets required: length of your system in metres+1



LINEAR CONNECTOR

| TYPE | ORDER CODE |
|------------------|------------|
| linear connector | 033-65020 |



SUSPENSION KIT FOR HEAVY WEIGHTS

| L (mm) | ORDER CODE |
|--------|------------|
| 2000 | 033-66050 |

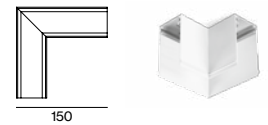
use suspension kit every 2 m



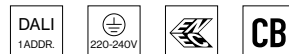
CORNER CONNECTOR 90°

| TYPE | ORDER CODE |
|----------------------|------------|
| corner connector 90° | 033-6506 |

X- and T- connector on request



TRACK 3-phase / 3-phase + DALI-bus



TRACK 240V-16A

| L (mm) | ORDER CODE |
|--------------------------------|------------|
| 1000 | 386-01111 |
| 2000 | 386-01121 |
| 3000 | 386-01131 |
| 4000 | 386-01141 |
| track mounting set (10 pieces) | 033-65030 |



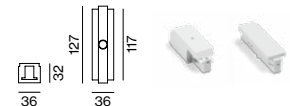
end cap 386-021011



end feed right 386-02131

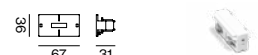
end feed left 386-02141

middle feed 386-02032

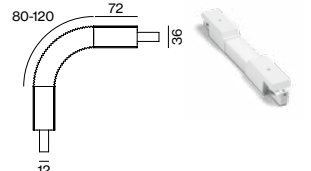


CONNECTORS 240V-16A

TYPE **ORDER CODE**
linear connector 386-02111



adjustable connector 386-02116



TRACK ACCESSORIES

[page 746](#)



Inspiration

Fernsehturm
Stuttgart, Germany

ARCHITECT
Ghanai+Heinrich interiorpartners
Stuttgart, Germany

PRODUCT
CANYON 50 offset
TIMO 80 free

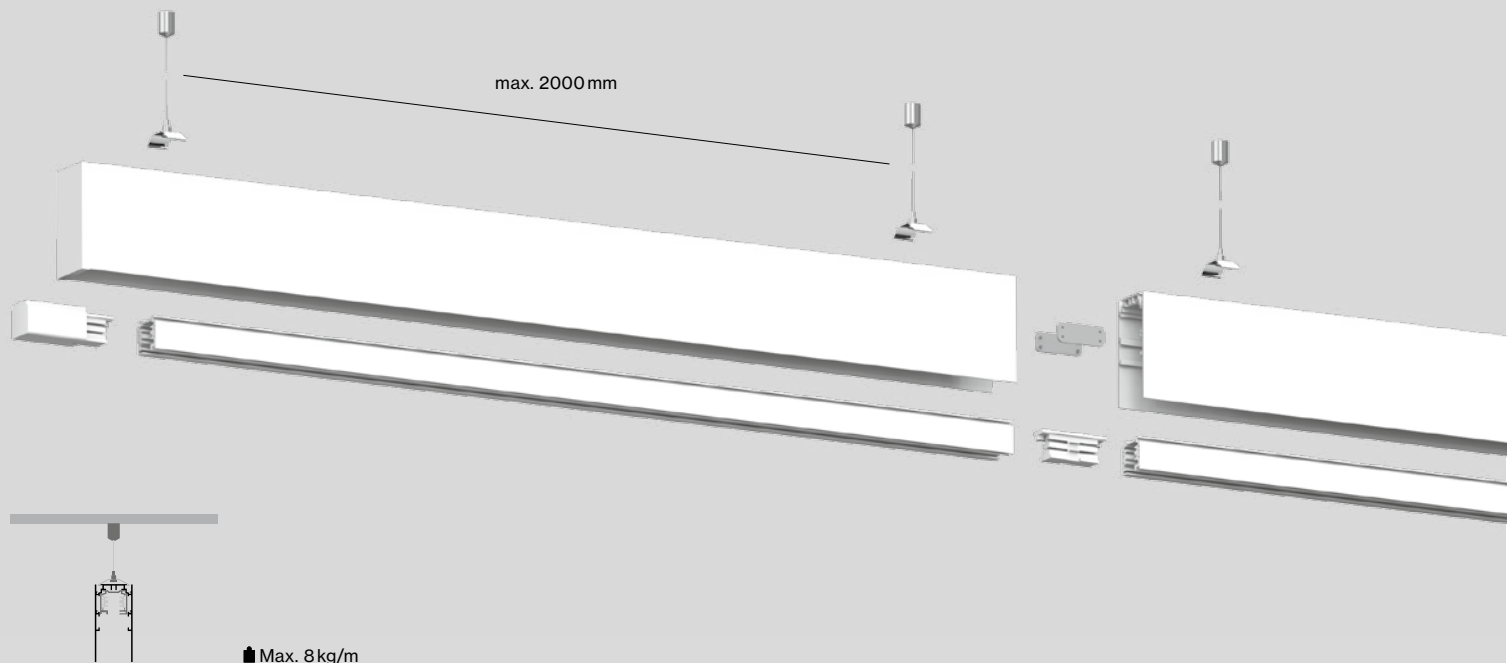




CANYON 50

surface / suspended

xal.com/canyon



Quickinfo

GENERAL

channel surface / suspended
IP20

ELECTRICAL

220–240 V
non DIM, DIM DALI

PHYSICAL

aluminium
powder-coated
white, black

Description

ES Perfil de aluminio extruido para el alojamiento de carriles electrificados de 3 fases; superficie con recubrimiento de pintura en polvo en colores blanco o negro; nivel del carril conductor retranqueado; para montaje superpuesto en el techo o para montaje suspendido (cable de 1500 mm); suspensión por medio de clips elásticos libremente posicionables y regulación en altura sin herramientas; optimizado para focos BO 70, TIMO 80, KIS y ARGO, el adaptador desaparece en el canal; para sistemas de perfiles continuos; conectores angulares de 90° para el montaje rectangular del sistema

FR Profilé en aluminium extrudé pour montage de rails triphasés ; surface thermolaquée blanche ou noir ; niveau de rails conducteurs placé en retrait ; pour montage au plafond en saillie ou pour montage suspendu (câble de suspension 1500 mm) ; suspension via clips à ressort au positionnement libre et réglage en hauteur sans outils ; optimisé pour spots BO 70, TIMO 80, KIS et ARGO, adaptateur dissimulé dans le canal ; pour systèmes profilés continus ; équerres de raccordement 90° pour structure de système rectangulaire

Features



optimised for
track lights BO 70,
TIMO 80, KIS, ARGO

Standard configuration

| | |
|----------------|---|
| CONTROL | ◆ |
| non DIM | 1 |

| | |
|------------------------|---|
| MATERIAL COLOUR | ▣ |
| white | 7 |
| black | 8 |



Extended configuration

| | |
|----------------|---|
| CONTROL | ◆ |
| DIM DALI | 3 |

CANYON 50 surface / suspended

INSTALLATION CHANNEL

| L (mm) | ORDER CODE |
|------------|------------|
| 1075 | 033-6610 |
| 2075 | 033-6620 |
| 3000 | 033-6630 |
| custom cut | E85400 |



END CAPS (pair)

| TYPE | ORDER CODE |
|-------|------------|
| white | 033-66047 |
| black | 033-66048 |



LINEAR CONNECTOR

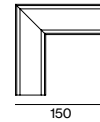
| TYPE | ORDER CODE |
|------------------|------------|
| linear connector | 033-65020 |



CORNER CONNECTOR 90°

| TYPE | ORDER CODE |
|----------------------|------------|
| corner connector 90° | 033-6606 |

X- and T- connector on request



SUSPENSION

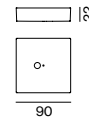
| TYPE | L (mm) | ORDER CODE |
|------------------|--------|------------|
| cable suspension | 1500 | 033-66050 |

use suspension kit every 2 m

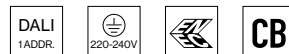


POWER FEEDER CANOPY

| TYPE | L (mm) | ORDER CODE |
|-------------------------|--------|------------|
| 5 × 1,5 mm ² | 1500 | 005-221241 |
| 7 × 1,5 mm ² | 1500 | 005-221251 |



TRACK 3-phase / 3-phase + DALI-bus



TRACK 240V-16A

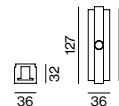
| L (mm) | ORDER CODE |
|--------------------------------|------------|
| 1000 | 386-01111 |
| 2000 | 386-01121 |
| 3000 | 386-01131 |
| 4000 | 386-01141 |
| track mounting set (10 pieces) | 033-65030 |



| | |
|---------|------------|
| end cap | 386-021011 |
|---------|------------|

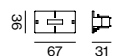


| | |
|----------------|-----------|
| end feed right | 386-02131 |
| end feed left | 386-02141 |
| middle feed | 386-02032 |

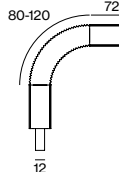


CONNECTORS 240V-16A

| TYPE | ORDER CODE |
|------------------|------------|
| linear connector | 386-02111 |



| | |
|----------------------|-----------|
| adjustable connector | 386-02116 |
|----------------------|-----------|



TRACK ACCESSORIES

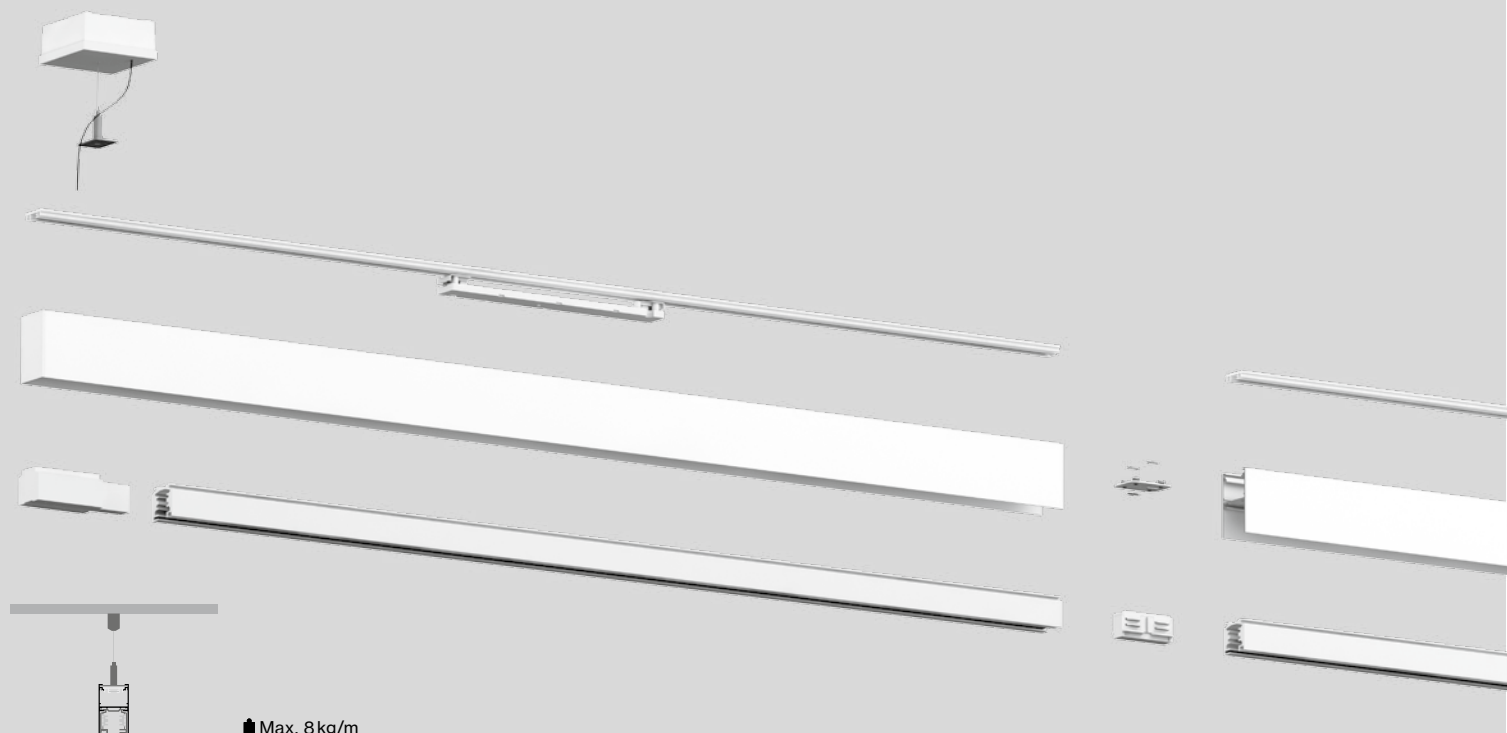
page 746



STILO 40

suspended

xal.com/stilo



Max. 8kg/m

Quickinfo

GENERAL

channel + tracklight suspended
IP20

LED

Mid-power LED
3000 K, 4000 K
CRI ≥ 80
Binning initial ≤ 3 MacAdam

ESTIMATED LED LIFETIME

L80/50 000h

OPTICAL

indirect illumination
PMMA cover opal

ELECTRICAL

220-240 V
non DIM, DIM DALI

PHYSICAL

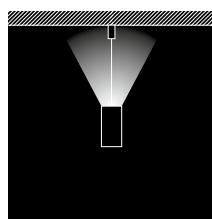
aluminium
powder-coated
white, grey, black

Description

ES Perfil de aluminio extruido incl. carril electrificado trifásico; superficie con recubrimiento de pintura en polvo en colores blanco, gris o negro; para montaje suspendido (cable de 1500 mm); suspensión por medio de clips elásticos libremente posicionables y regulación en altura sin herramientas; para sistemas de perfiles continuos; conectores angulares de 90° para el montaje rectangular del sistema; opcionalmente pueden utilizarse elementos de luz con característica de emisión indirecta para acentuar adicionalmente el techo; La distribución indirecta cuenta con un difusor opal; binning inicial ≤ 3 MacAdam; disponible en 3000 K y 4000 K; CRI ≥ 80; mín. 80 % de flujo luminoso después de 50.000 horas de vida útil; protección IP20; CP I; opcional dimable DALI

FR Profil extrudé en aluminium avec rail électrique triphasé ; surface thermolaquée blanche, grise ou noire ; pour montage suspendu (câble de suspension 1500 mm) ; suspension via clips à ressort au positionnement libre et réglage en hauteur sans outils ; pour systèmes profilés continus ; équerres de raccordement 90° pour structure de système rectangulaire ; éléments lumineux en option avec caractéristiques de rayonnement indirectes pouvant être mis en œuvre pour une accentuation supplémentaire du plafond ; Partie indirecte recouverte avec cache opale ; binning initial ≤ 3 MacAdam ; livrable dans les couleurs de lumière 3000 K et 4000 K ; CRI ≥ 80 ; min. 80 % du flux lumineux au bout de 50000 h de durée de vie ; genre protection IP20 ; CP I ; en option gradable DALI

Features



available with indirect illumination

Standard configuration

COLOUR TEMPERATURE 
3000K 5

CONTROL 
non DIM 1

MATERIAL COLOUR 
white 7



Extended configuration

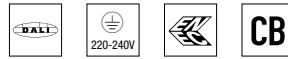
COLOUR TEMPERATURE 
4000K 6

CONTROL 
DIM DALI 3







MATERIAL COLOUR 
grey G
black 8



STILO 40 3-phase / 3-phase + DALI-bus




CHANNEL + 3-PHASE/BUS TRACK

| L (mm) | ORDER CODE |
|--------|---|
| 1000 | 033-70040   |
| 2000 | 033-70060   |
| 3000 | 033-70090   |




END CAP

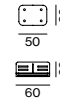
| TYPE | ORDER CODE |
|---------|---|
| end cap | 033-70100  |



separate track end caps not necessary

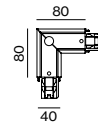
LINEAR CONNECTOR

| TYPE | ORDER CODE |
|----------------------------|---|
| linear connector (1 piece) | 033-70210  |



CONNECTOR LEFT/RIGHT

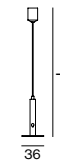
| TYPE | ORDER CODE |
|------------------|---|
| 90° corner left | 033-70220   |
| 90° corner right | 033-70230   |





T- and X-connector on request. based on the special project requirements (left/right, feeding option earth inside/outside).

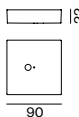
CABLE SUSPENSION

| L (mm) | ORDER CODE |
|--------|-------------|
| 1500 | 033-7032000 |









POWER FEEDER CANOPY

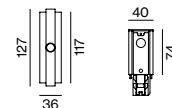
| TYPE | L (mm) | ORDER CODE |
|-------------------------|--------|--|
| 5 × 1,5 mm ² | 1500 | 005-221241  |
| 7 × 1,5 mm ² | 1500 | 005-221251  |



use for installation channel and inset indirect

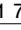
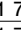
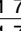
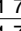
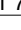




POWER FEEDER LEFT/RIGHT/MIDDLE

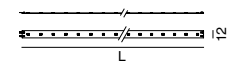
| TYPE | ORDER CODE |
|---------------------|---|
| power feeder left | 033-70400   |
| power feeder right | 033-70410   |
| power feeder middle | 033-70420   |



INSET indirect



| SYSTEM POWER | L (mm) | ORDER CODE |
|--------------|--------|--|
| 5 W | 500 | 033-7062    |
| 10 W | 1000 | 033-7064   |
| 19 W | 2000 | 033-7066   |
| 29 W | 3000 | 033-7069   |



TRACK 3-phase recessed

Standard configuration

CONTROL 
non DIM 1

MATERIAL COLOUR

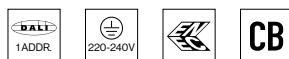
white



Extended configuration

CONTROL 
DIM DALI 3

TRACK 3-phase / 3-phase + DALI-bus



TRACK 240V-16A

| L (mm) | ORDER CODE |
|--------|-----------------------|
| 2000 | 3 8 6 - 0 1 2 2 1 ⇄ 7 |
| 3000 | 3 8 6 - 0 1 2 3 1 ⇄ 7 |
| 4000 | 3 8 6 - 0 1 2 4 1 ⇄ 7 |

end cap 3 8 6 - 0 2 2 0 1 1 7

end feed right 3 8 6 - 0 2 2 3 1 ⇄ 7

end feed left 3 8 6 - 0 2 2 4 1 ⇄ 7

middle feed 3 8 6 - 0 2 0 3 2 ⇄ 7

CONNECTORS 240V-16A

TYPE **ORDER CODE**
linear connector 3 8 6 - 0 2 2 1 1 ⇄ 7

L-connector 3 8 6 - 0 2 2 1 2 ⇄ 7

L-connector right 3 8 6 - 0 2 2 1 3 ⇄ 7

L-connector left 3 8 6 - 0 2 2 2 3 ⇄ 7

T-connector right 3 8 6 - 0 2 2 1 4 ⇄ 7

T-connector left 3 8 6 - 0 2 2 2 4 ⇄ 7

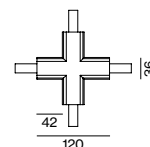
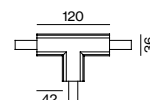
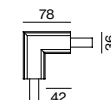
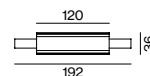
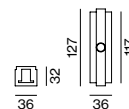
X-connector 3 8 6 - 0 2 2 1 5 ⇄ 7

MOUNTING ACCESSORIES

TYPE **ORDER CODE**
clip 3 8 6 - 0 2 2 5 1 1 0

suspension element 3 8 6 - 0 2 2 5 2 1 0

40xL



TRACK 3-phase surface / suspended

Standard configuration

CONTROL 
non DIM 1

MATERIAL COLOUR 
white 7

7

Extended configuration

CONTROL 
DIM DALI 3

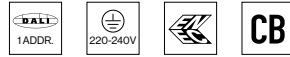
TRACK MATERIAL COLOUR 
grey 6
black 8

6 8

ACCESSORY MATERIAL COLOUR 
grey 0
black 8


0 8




TRACK 3-phase / 3-phase + DALI-bus



TRACK 240V-16A

| L (mm) | ORDER CODE |
|--------|--|
| 1000 | 386-011111  |
| 2000 | 386-011121  |
| 3000 | 386-011131  |
| 4000 | 386-011141  |

end cap 386-021011 

end feed right 386-021311 
end feed left 386-021411 
middle feed 386-020321 

CONNECTORS 240V-16A

TYPE **ORDER CODE**
linear connector 386-021111 

I-connector 386-021112 

L-connector right 386-021113 
L-connector left 386-021231 

T-connector right 386-021114 
T-connector left 386-021241 

X-connector 386-021115 

adjustable corner connector 386-021116 

MOUNTING ACCESSORIES

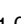
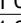
TYPE **ORDER CODE**
ceiling clip 386-021511 

pendant clip 386-021521 

joiner piece 386-021531 

SUSPENSION KIT

TYPE **ORDER CODE**
pendant 600 386-021611 
pendant 1200 386-021621 

cable 1500 386-021711 
cable 3000 386-021721 
cable 6200 386-021731 